



Montelena

APARTMENT HOMES



Montelena

APARTMENT HOMES

Indulge yourself in luxurious apartment living. Convenience, uncompromising style, and exceptional service are among the many qualities that set Montelena apart.

Tuscan inspired surrounded by lush landscaping transport you to a charming Florentine villa without leaving the conveniences of Grapevine. From the state-of-the-art fitness center to the sparkling pool and heated spa, coming home to Montelena will make every day like coming home to a relaxing resort.



501 Turner Road

Grapevine, TX 76051

817-329-5815

www.montelenaapts.net

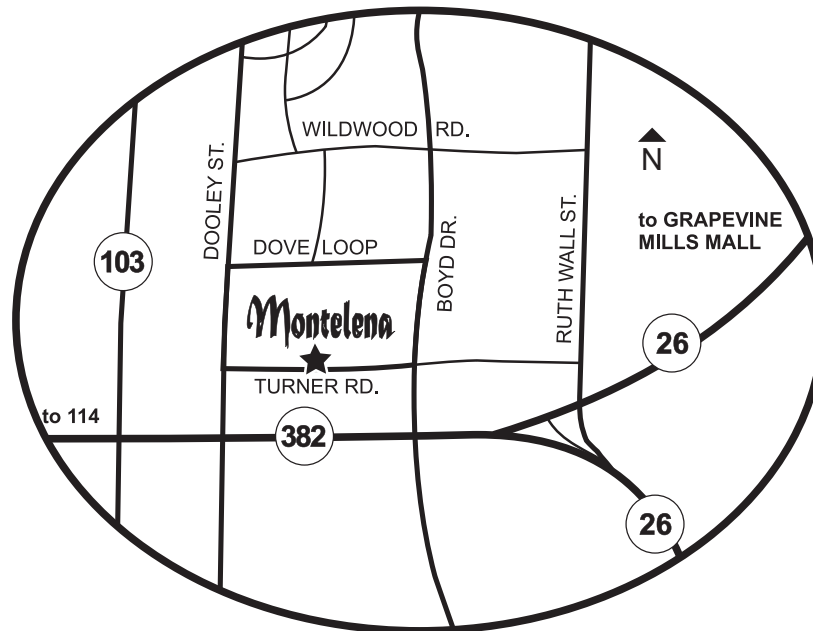




Be spontaneous. *Montelena offers access to all kinds of entertainment – both indoors and out.*

LOCATION

Montelena is conveniently located in the mid-cities area... 21 miles to Dallas and 19 miles to Fort Worth. Dallas/Fort Worth International Airport and Grapevine Mills are within a few miles, as well as large employers at Baylor Medical Center, Fidelity, and Gaylord Texan Resort. The community is minutes from Grapevine Lake, Historic Grapevine Main Street, and several Local Grapevine Wineries.



Area Features

- Minutes to Historic Downtown Grapevine
- 1 mile from Grapevine Mills Mall and Bass Pro
- Minutes from DFW International Airport
- Just down the street from Great Wolf Lodge, Gaylord Texan Resort, and Grapevine Lake





With so many fun things to do, you'll think twice about hitting snooze on Saturdays.

LIFESTYLE

Montelena is modern apartment living—elevated. We designed this community in the heart of Grapevine as an escape from the bustle of urban life. Consider it your own private oasis—a place that takes you far away without actually having to get in your car.

You will delight in the unmatched attention to detail and distinctive architecture. Once you step inside your apartment home, you realize this is more than just a place to live, this is home.

With vaulted ceilings, ceramic tile entries, cozy fireplaces, each apartment home is just waiting for your touch to make it uniquely yours.





AMENITIES

Apartment Features

- Ceramic tile entry
- Wood burning fireplace with mantel*
- Washer/dryer connections
- Ceiling fan in master bedroom
- Vaulted ceiling in living area*
- Individual hot water heaters
- Linen storage
- Exterior closet storage
- Covered private patio/balcony
- Kitchen pantry
- Double stainless steel sink
- Dual sink vanities in bathroom*
- Oversized walk-in closets
- Custom-styled wire closet shelving
- Mirrored wardrobe doors*
- Pre-wired for Internet, cable and intrusion alarm

Community Features

- Elegant architectural styling with custom stucco detail
- Lush landscaping
- Free wireless Internet in the pool and clubhouse areas
- Swimming pool
- Outdoor heated spa
- Executive Fitness Center 24/7
- Sand volleyball court
- Picnic area
- Barbecue grills
- Play area
- Laundry room
- 24-Hour maintenance
- Resident Business Center

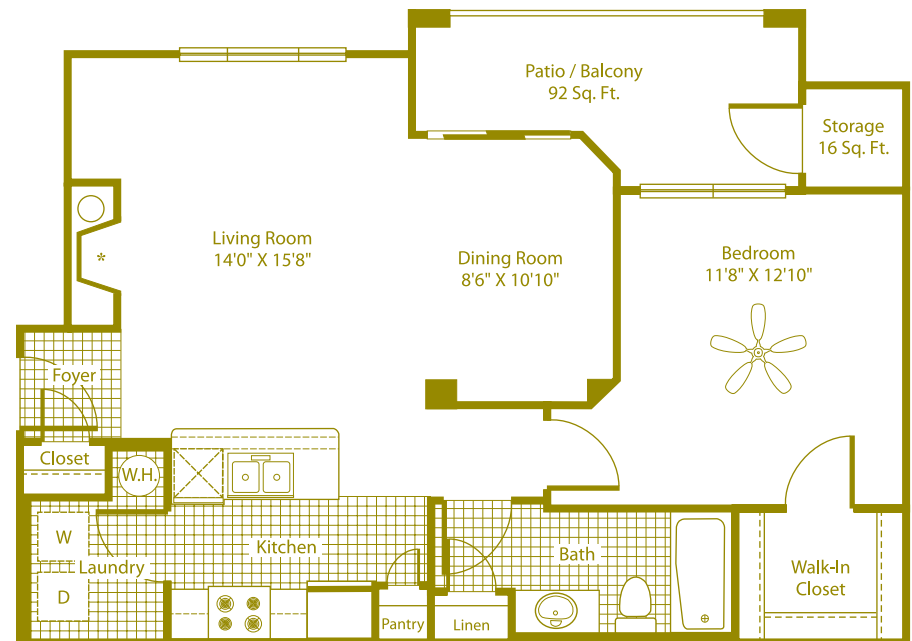
*available in select apartment homes

FLOOR PLANS

Montelena's natural outdoor setting provides plenty of breathing room. And inside, you'll find the same. Large rooms, lots of windows, great views and wonderful patios.

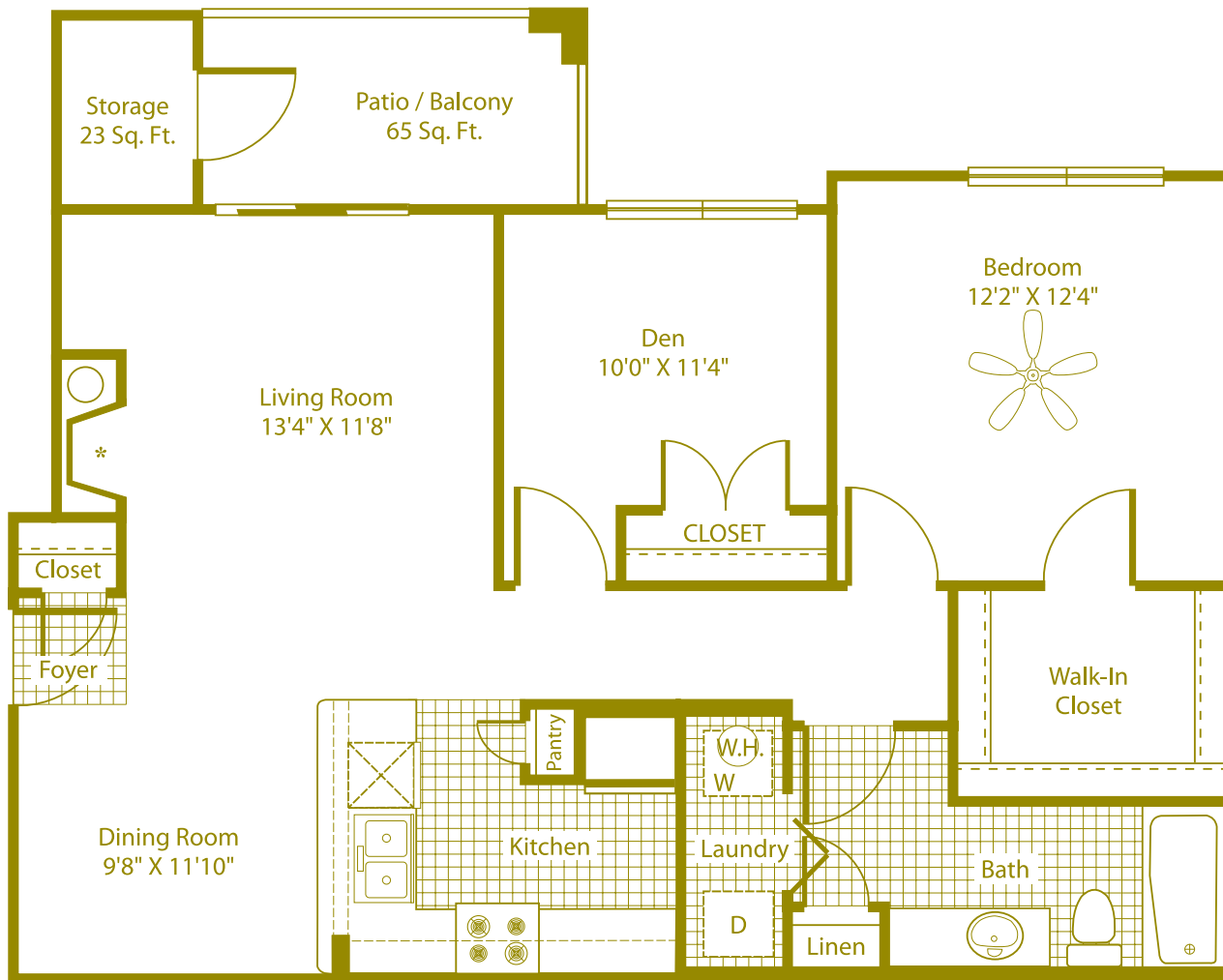


PINOT
751 Square Feet
1 Bedroom • 1 Bath



MERLOT
793 Square Feet
1 Bedroom • 1 Bath

Fireplace in select apartment homes



CABERNET
 920 Square Feet
 1 Bedroom • Den • 1 Bath

Our floor plans blend style and space, creating an open and inviting home.



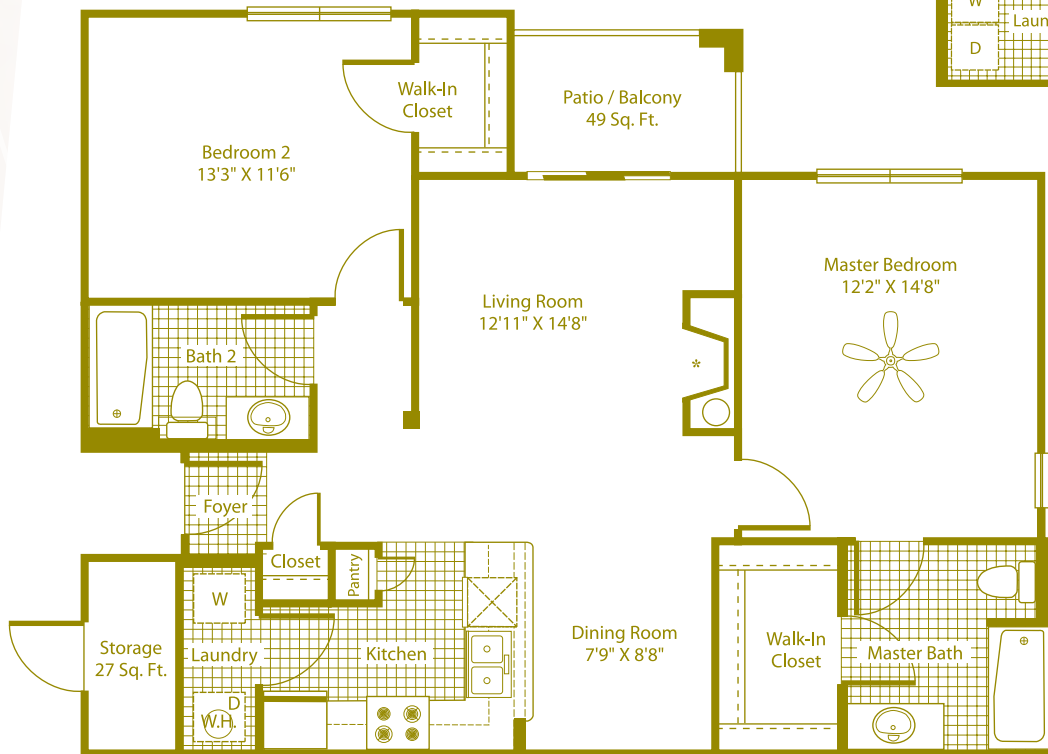
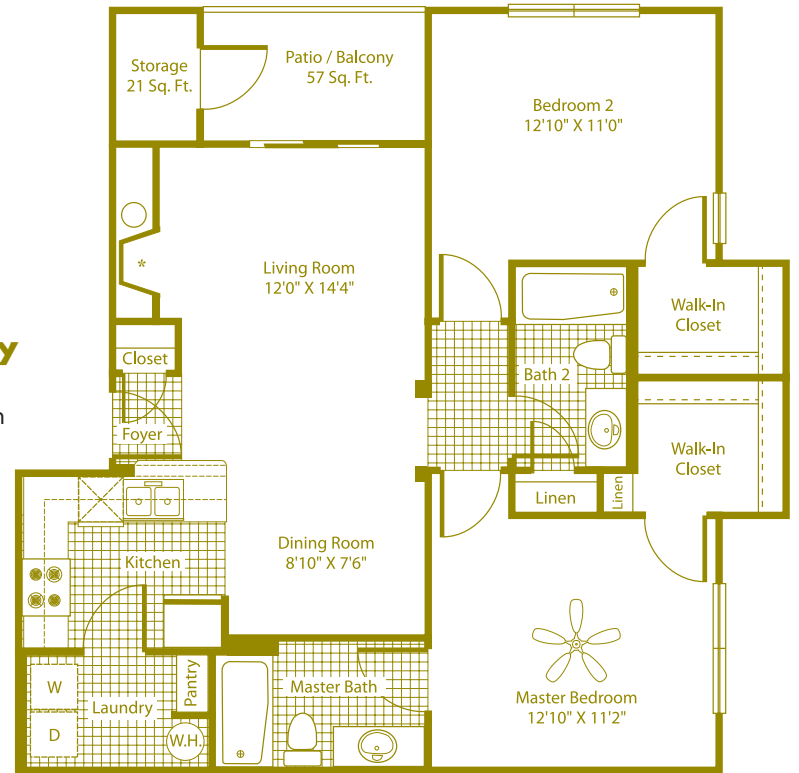
Fireplace in select apartment homes

FLOOR PLANS

Each plan offers designer touches including pass through serving bars, pantries, fire places, and lots of storage.

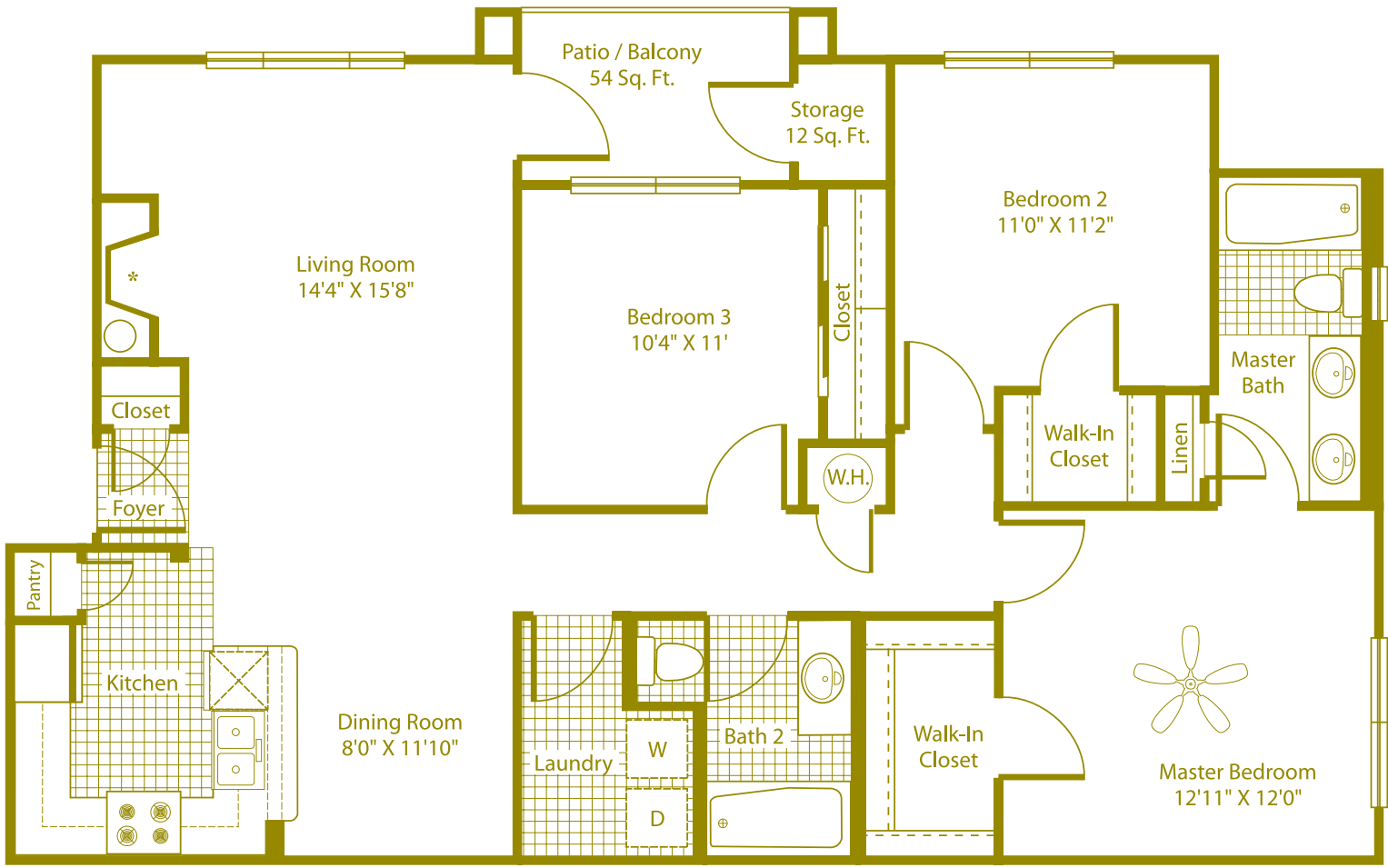
CHARDONNAY

954 Square Feet
2 Bedroom • 2 Bath



RIESLING
1022 Square Feet
2 Bedroom • 2 Bath

Fireplace in select apartment homes



CHAMPAGNE

1219 Square Feet
3 Bedroom • 2 Bath

Fireplace in select apartment homes

Whether it's extra space for you or your family, these plans make for beautiful living.



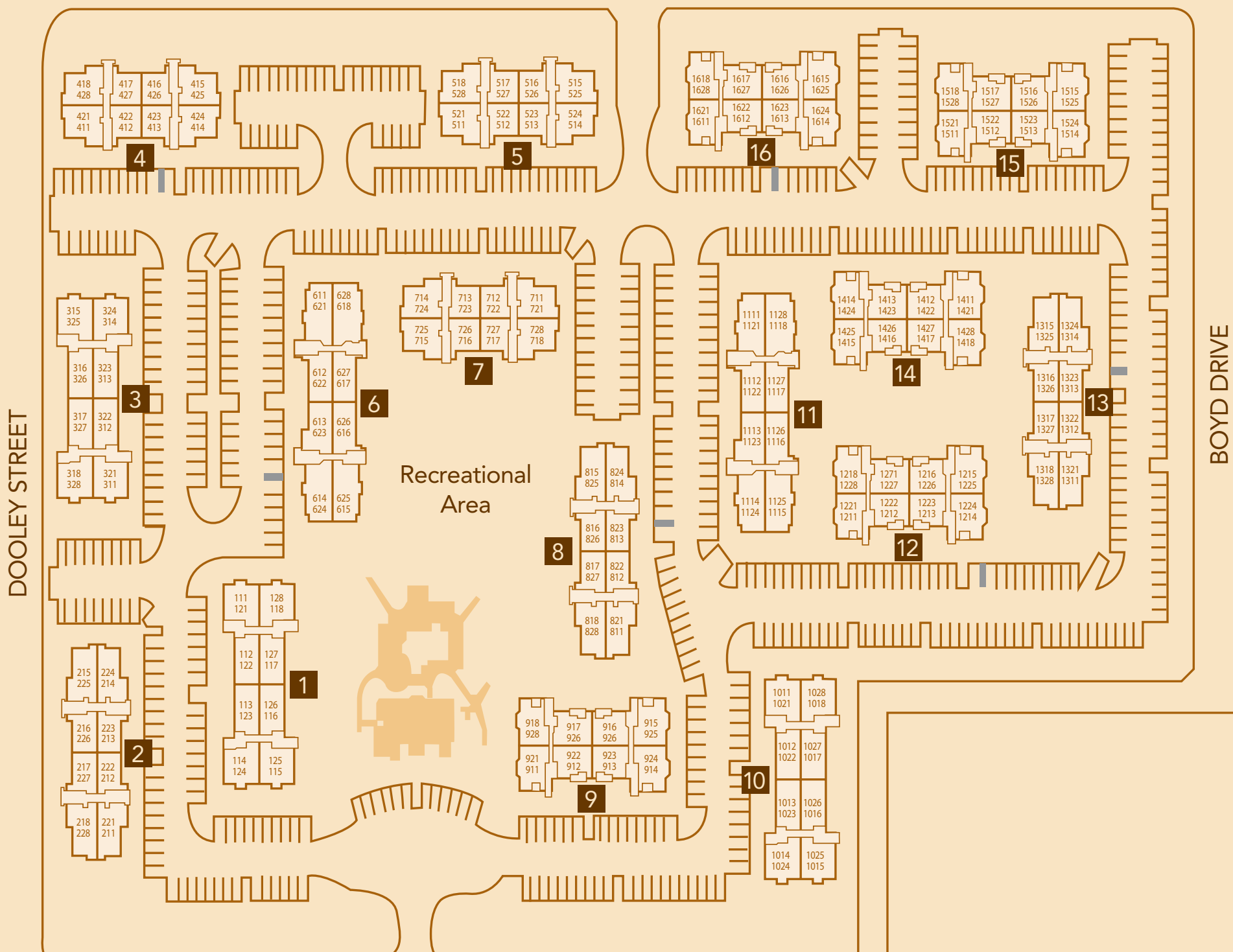
EXTRAORDINARY SERVICE. 24/7.

It's one thing to offer a stylish residence. It's quite another to offer the people who live there a level of service that exceeds their expectations. At Simpson Property Group, we've built our reputation on service. In fact, for several years in a row, we've earned the coveted "A List" Award for Service Excellence — a distinction reserved for only a select few firms by the multifamily real-estate industry.

Of course, our biggest reward isn't a plaque on the wall. It's the trust we earn from our residents every day. At Montelena, you'll have a home that we ourselves would be proud to call home. You'll be surrounded by the highest-quality amenities; and you'll enjoy a lifestyle unlike anything else in Grapevine.



DOVE LOOP



A beautiful natural setting. Live life at your pace — at Montelena Apartments.

CLOSE TO EVERYTHING — OR NOTHING AT ALL.

Life at Montelena happens at your pace — whether you want the energy of Grapevine, the relaxation of nature, or the quiet time poolside doing nothing at all. Call today to learn more about our stylish floor plans and gracious amenities. We look forward to having you as a resident at Montelena.

**FPO
CARD**

501 Turner Road • Grapevine, TX 76051

Phone: 817-329-5815 • Fax: 817-329-6997

www.montelenaapts.net



Information subject to change, error or deletion.

Montelena
APARTMENT HOMES