

ACCESSIBLE LOCATION



BENSON DOWNS

APARTMENT HOMES

TRANQUILITY, ELEGANCE, CONVENIENCE.



- | | | |
|--------------------------|------------------------------|------------------------------|
| 1 Fred Meyer | 9 Starfire Sports Complex | 17 Spot Sports Bar and Grill |
| 2 Safeway | 10 Tukwila Family Fun Center | 18 LA Fitness |
| 3 Valley Medical Center | 11 Cedar River Park | 19 UPS Store |
| 4 South Center Mall | 12 Renton KinderCare | 20 IKEA |
| 5 Renton Airport | 13 BECU | 21 Costco |
| 6 The Landing | 14 Starbuck's | 22 Regal Cinemas |
| 7 Maple Wood Golf Course | 15 Bank of America | |
| 8 Fairwood Country Club | 16 US Bank | |

BensonDownsApts.com

11100 SE Petrovitsky Road
Renton, WA 98055
T 425.271.7797 F 425.271.8288



RELAX. ENJOY. LIVE.



An idyllic haven, Benson Downs rests amidst the lushness of one of Washington's most scenic landscapes. While refreshing and peaceful, Benson Down's prime location allows you to stay in touch with all of the conveniences of modern living. Close to elite shopping malls, easy access to major freeways and numerous outdoor activities nearby, Benson Downs really does offer it all!

Each apartment has been thoughtfully designed to complement your personal style of living. Presented are spacious one, two and three bedroom floorplans suited to differing lifestyles, including such features as cozy fireplaces, large living areas and full-size washers and dryers.

Experience ultimate convenience, superb service and exceptional value in the heart of Renton at Benson Downs.



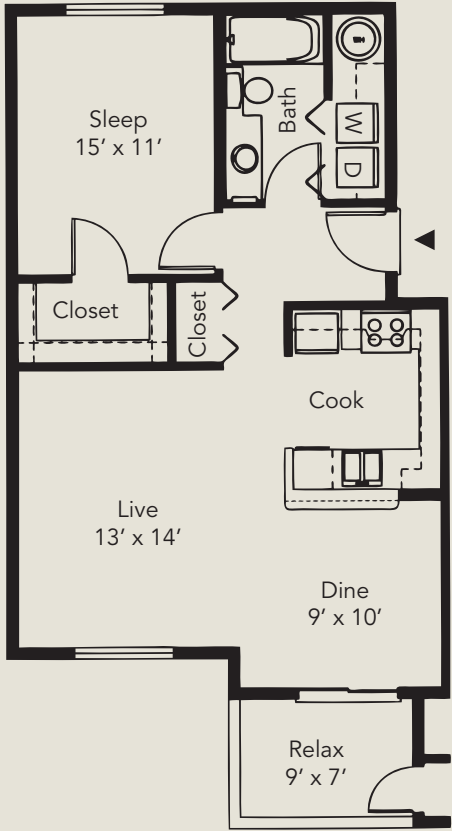
COMMUNITY FEATURES

- Newly updated clubhouse with media room and full-service kitchen
- Outdoor seasonal pool
- Year-round spa
- Wi-Fi business center
- Fitness center
- Complimentary tanning
- Pet-friendly community
- Off-leash dog park on-site
- On-site play area
- Easy freeway access
- Close to public transportation
- Minutes to dining, shopping & entertainment

APARTMENT FEATURES

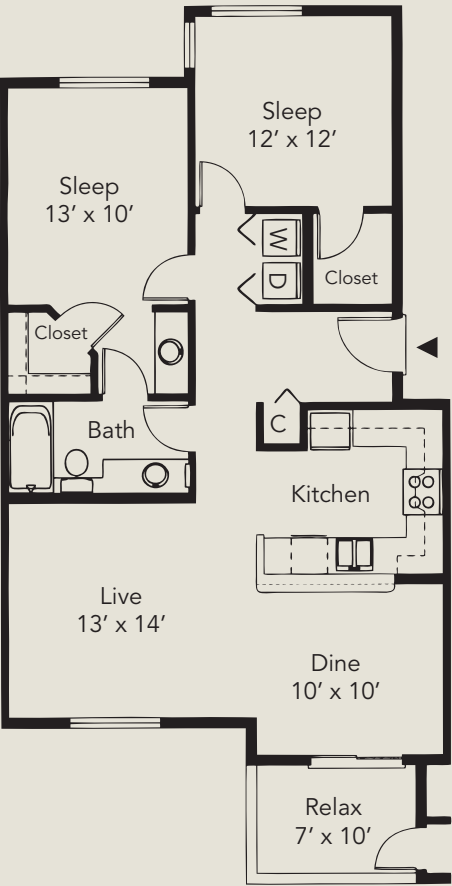
- Spacious one, two and three bedroom apartment homes
- Private balcony or patio with storage
- Cozy fireplaces*
- Large walk-in closets*
- Full-size dishwashers
- Microwaves
- Full-size washer and dryer
- High speed internet access available
- Covered parking
- Large garages available
- Views of lush wetlands*

* IN SELECT HOMES



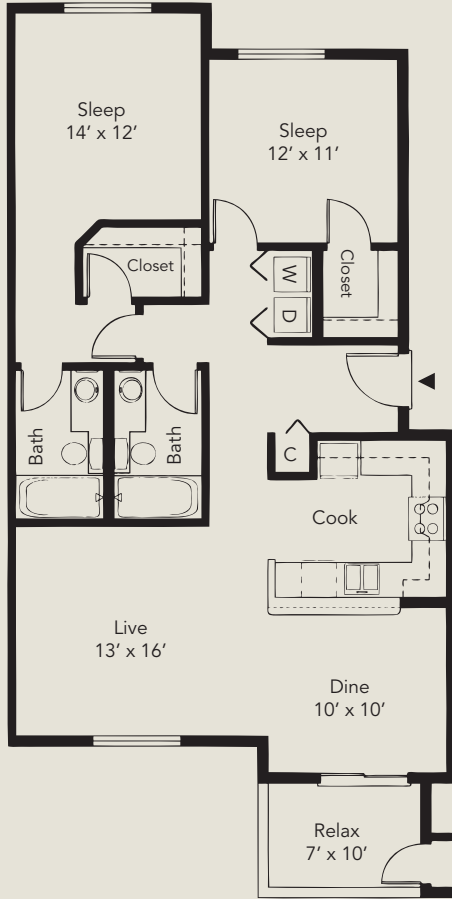
One Bedroom / One Bath
719 Sq. Ft.

\$ _____



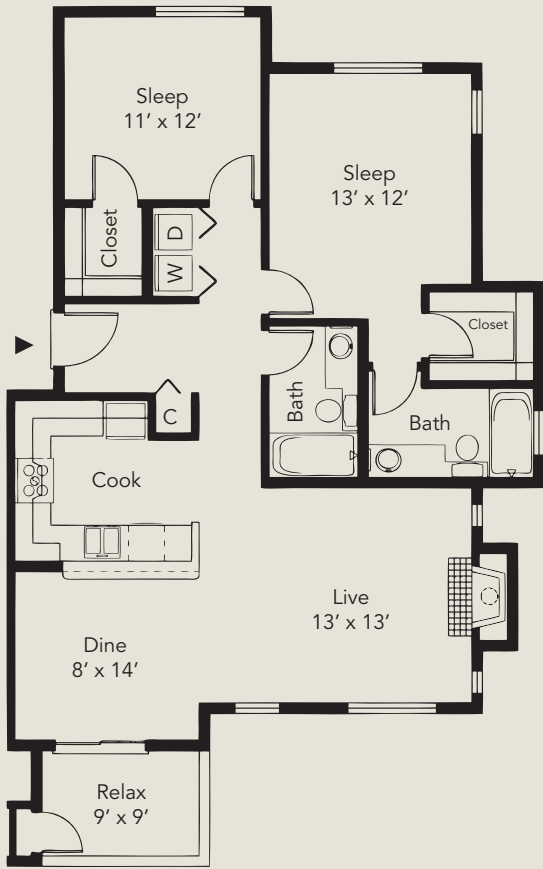
Two Bedrooms / One Bath
916 Sq. Ft.

\$ _____



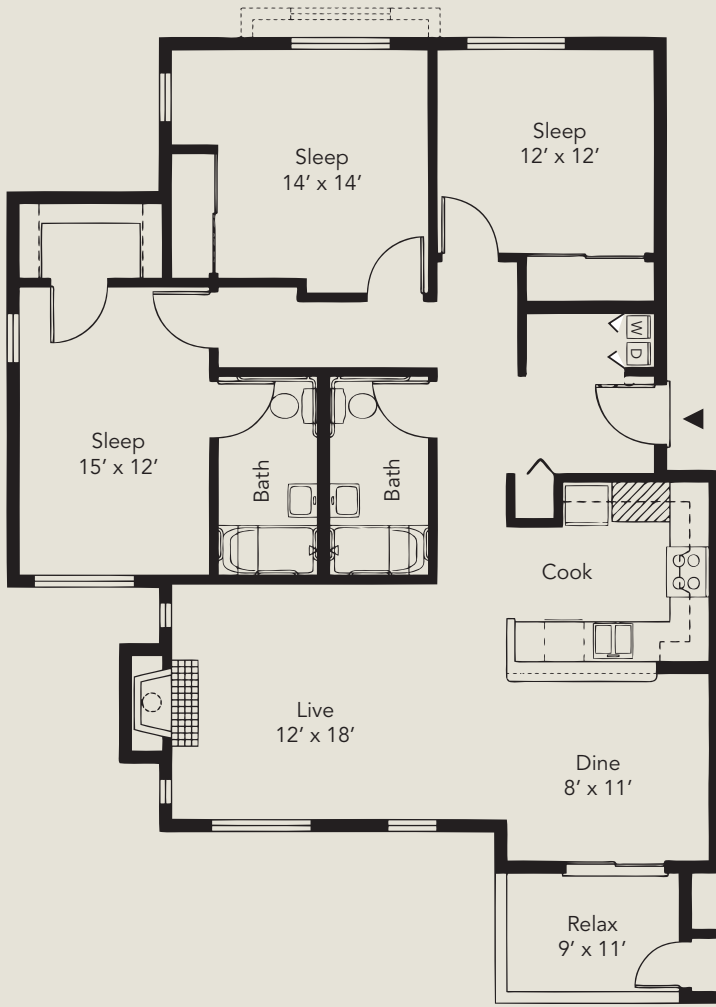
Two Bedrooms / Two Baths
1011 Sq. Ft.

\$ _____



Two Bedrooms / Two Baths
1036 Sq. Ft

\$ _____



Three Bedroom / Two Baths
1245 Sq. Ft.

\$ _____

PRICES CHANGE DAILY. FLOOR PLANS ARE NOT TO SCALE. DIMENSIONS AND SQUARE FOOTAGE MAY VARY.

Date: _____

Deposit \$ _____

Application Fee \$ _____

Pet Deposit / Pet Rent \$ _____