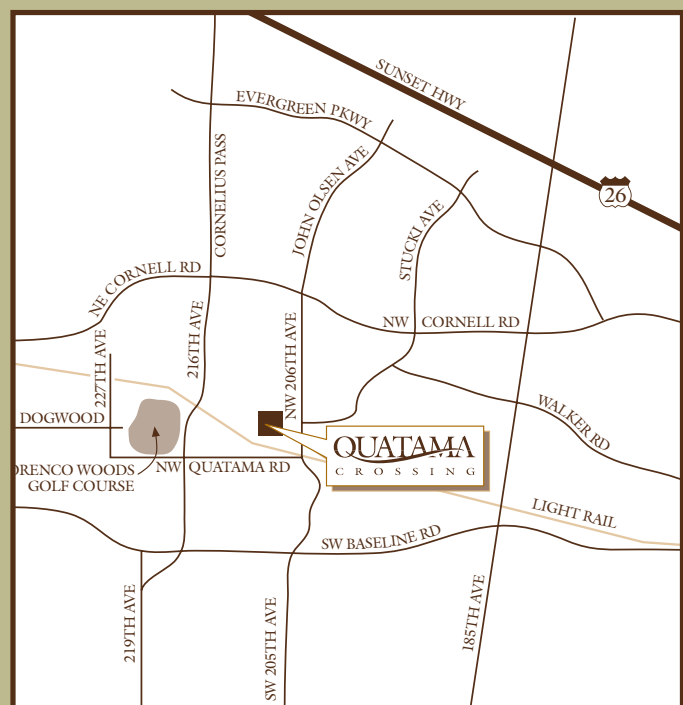


RELAX AND
UNWIND



QuatamaCrossing.com
8650 NE Trailwalk Drive
Hillsboro, OR 97006
503.645.8215



QUATAMA
CROSSING



TRANQUIL
URBAN LIVING

QUATAMA CROSSING PROVIDES A distinctive apartment lifestyle in a tranquil, yet urban setting. A location surrounded by lush greenbelts and parks, friendly neighborhoods featuring beautiful landscaping, and serene views of the surrounding hillsides ever changing with the season, makes Quatama Crossing the ideal place to relax and unwind. Yet, great shopping, dining, entertainment, business centers, and access to the light rail system are only minutes away. Quatama Crossing is as unique as the people who live here, with a variety of floorplans ranging from traditional one-bedroom to grand three-bedroom apartment homes. Come home to Quatama Crossing.

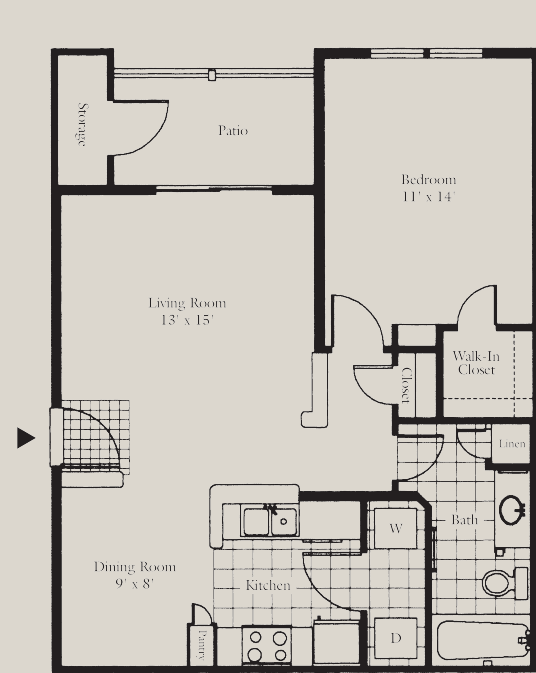


APARTMENT FEATURES

- Spacious one, two and three bedroom apartment homes
- Private garages with automatic openers available
- Full-size washer & dryer in every home
- Coffered ceilings in select third floor apartments
- Ceiling fans
- Large walk-in closets
- Generous sized patio or balcony
- Additional storage area
- Double master suites available

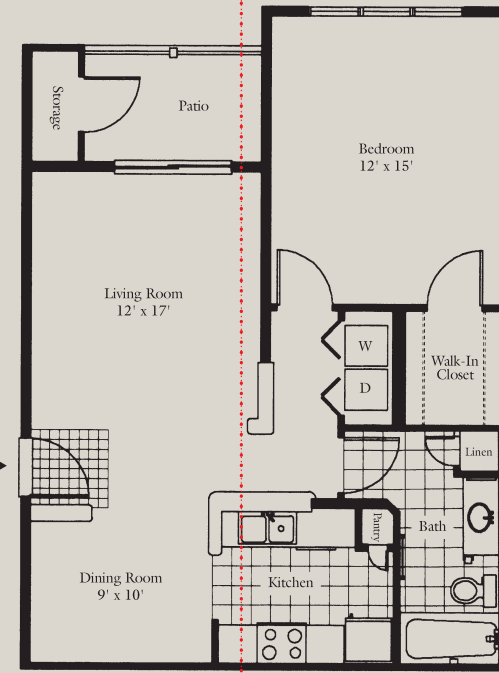
COMMUNITY FEATURES

- Clubhouse and recreation center with community room
- Resident business center
- Indoor gymnasium with basketball court
- State-of-the-art fitness center
- Outdoor children's play areas
- Heated swimming pool
- Very pet friendly
- On light rail (MAX) line



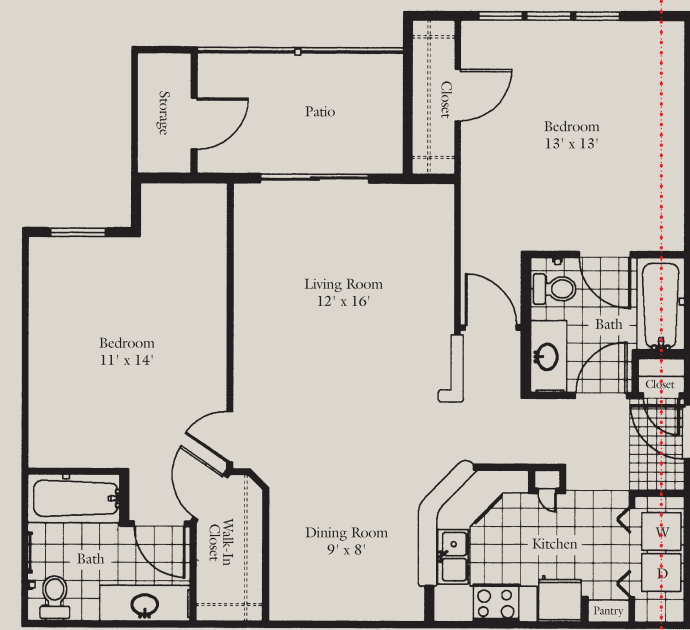
OPAL • 706 Sq. Ft.
One Bedroom / One Bath

\$ _____



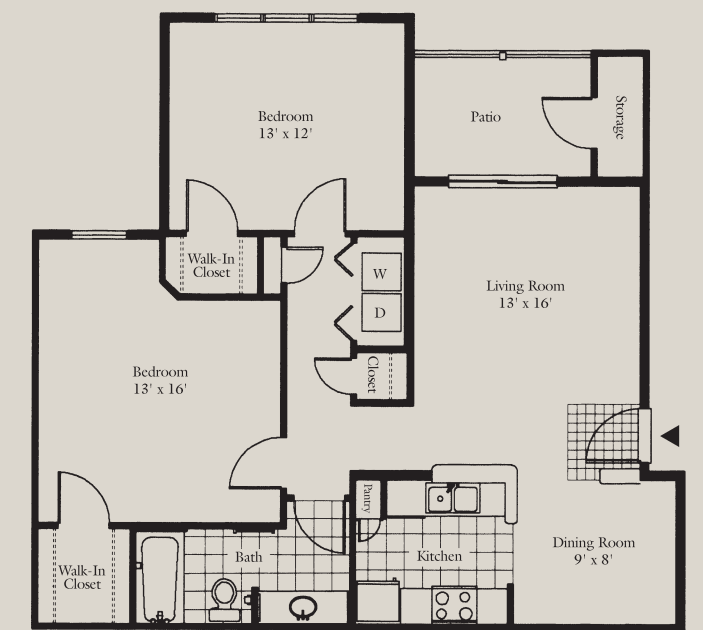
ONYX • 752 Sq. Ft.
One Bedroom / One Bath

\$ _____



AMETHYST • 1051 Sq. Ft.
Two Bedroom / Two Bath

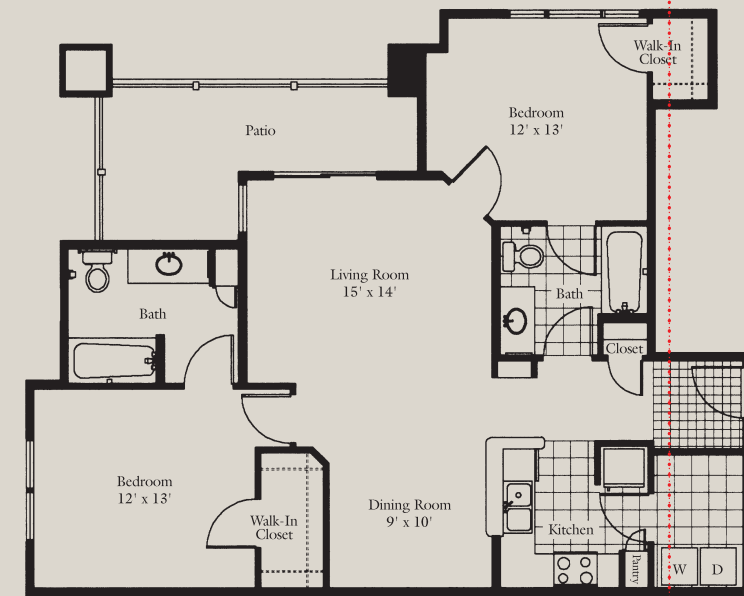
\$ _____



QUARTZ • 974 Sq. Ft.
Two Bedroom / One Bath

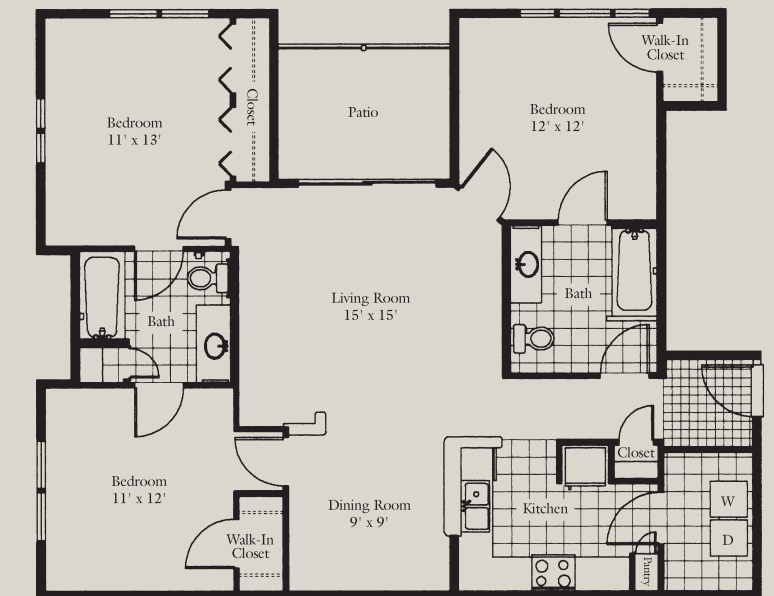
\$ _____

PRICES CHANGE DAILY. FLOOR PLANS ARE NOT TO SCALE. DIMENSIONS AND SQUARE FOOTAGE MAY VARY.



ABALONE • 1054 Sq. Ft.
Two Bedroom / Two Bath

\$ _____



OBSIDIAN • 1220 Sq. Ft.
Three Bedroom / Two Bath

\$ _____

Date: _____

Application Fee \$ _____

Deposit \$ _____

Garage / Carport \$ _____

Pet Deposit \$ _____

Other _____