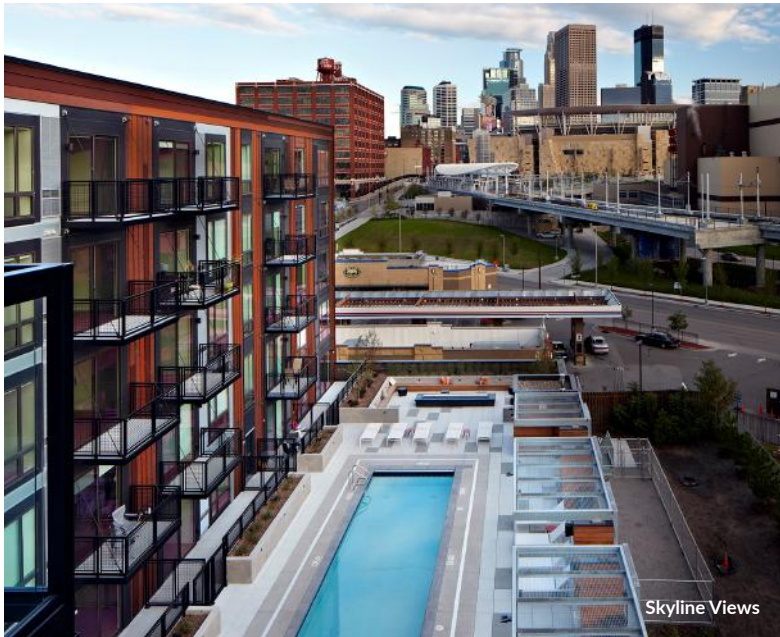




JUNCTION FLATS



Modern Kitchens



Skyline Views

COMMUNITY AMENITIES

- **Expansive Pool Deck:** with cabanas, large screen TVs and fire pits
- **Sky Lounge:** with demonstration kitchen and access to Sky Deck
- **24-hour Fitness Center:** with Wellbeats
- **Yoga and Spin Studio**
- **Pet-Friendly Community:** huge private dog park and on-site pet spa
- **Resident Lounge:** with billiards and fireplace
- **Conference Room**
- **Grilling Stations**
- **Bicycle Storage and Repair Station**
- **Underground Garage Parking**
- **24-hour Package Lockers**

INTERIOR FEATURES

- **Expansive Floor Plans:** studio, one and two-bedroom apartments
- **Hardwood-style or Concrete Floors**
- **Modern Kitchens:** granite countertops and tile backsplash
- **42" Flat Panel Cabinets:** espresso finish
- **Kitchen Islands***
- **Stainless Steel Appliances:** with gas ranges
- **Pendant and Track Lighting:** in kitchen
- **Ceiling Fans**
- **Floor-to-ceiling Windows**
- **Contemporary Bathrooms:** framed mirrors
- **Double Vanity***
- **Soaking Bathtubs:** with tile surround
- **Washer and Dryer Included**
- **Large Walk-in Closets***
- **State-of-the-art Keyless FOB Locks**
- **Individual Programmable Thermostats**
- **9' or 15' Ceilings**
- **Patios and Balconies**
- **Skyline Views***

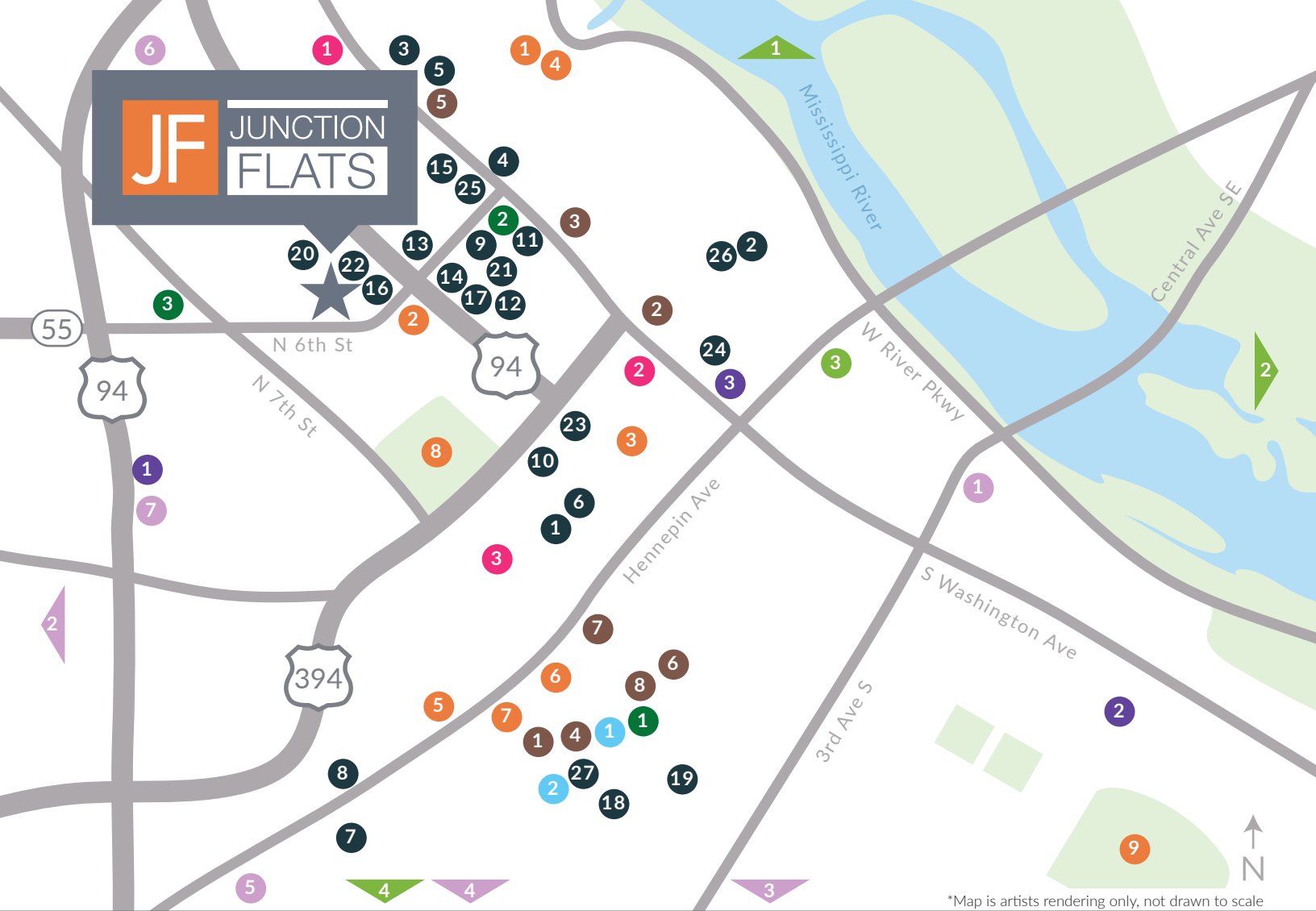
*In Select Homes



Resident Lounge

CONVENIENCES

- **Central Location:** in the North Loop neighborhood and a short drive to downtown Minneapolis
- **Convenient Access:** one and a half blocks to the Skyway
- **Freeway Accessibility:** convenient access to I-94 and I-394
- **Walking and Biking Paths:** nearby access to popular Cedar Lake Trail
- **Nearby Shopping and Dining:** walking distance to breweries, cafes, restaurants, farmers market and shops
- **Convenient Transit:** two blocks to Target Field Light Rail Station and Bike Share Program



*Map is artists rendering only, not drawn to scale

ART & ENTERTAINMENT

- 1 Acme Comedy Co
- 2 The Fillmore
- 3 Fine Line Music Cafe
- 4 The Lab Theater
- 5 Orpheum Theatre
- 6 Skyway Theatre
- 7 State Theatre
- 8 Target Field
- 9 U.S. Bank Stadium

BANKS

- 1 Bank of America
- 2 Sunrise Banks
- 3 Wells Fargo

CONVENIENCES

- 1 Avant Hair
- 2 Brian Graham Salon
- 3 Floyd's 99 Barbershop
- 4 GENT Cuts and Grooming
- 5 HAUS Salon
- 6 Juut Salon Spa
- 7 The UPS Store
- 8 Walgreens

FITNESS

- 1 Alchemy 365
- 2 ALTR
- 3 Life Time Athletic

DINING

- 1 508 Bar & Restaurant
- 2 The Bachelor Farmer
- 3 Bar La Grassa
- 4 Black Sheep Coal Fired Pizza
- 5 Borough
- 6 Brothers Bar & Grill
- 7 Buca di Beppo Italian Restaurant
- 8 Butcher & The Boar
- 9 Corner Coffee
- 10 Cowboy Jack's
- 11 Cuzzy's Grill & Bar
- 12 Darby's Pub & Grill
- 13 First Draft Taproom & Kitchen
- 14 Fish Bowl Poké
- 15 The Freehouse
- 16 Fulton Brewing Taproom
- 17 Graze | Provisions + Libations
- 18 Hell's Kitchen
- 19 Hen House Eatery
- 20 Inbound BrewCo
- 21 Modist Brewing Co.
- 22 Number 12 Cider
- 23 Pizza Luce
- 24 Red Cow North Loop
- 25 Smack Shack
- 26 Spoon and Stable
- 27 Zelo

GROCERY STORES

- 1 Minneapolis Farmers Market
- 2 Trader Joe's
- 3 Whole Foods Market

PARKS

- 1 Boom Island Park
- 2 Father Hennepin Bluff Park
- 3 Gateway Park
- 4 Loring Park

PETS

- 1 City Paws Pet Club
- 2 Downtown Dogs
- 3 Gateway Dog Park
- 4 The Good Dog Groomer
- 5 Loring Park Dog Park
- 6 Metro Dogs Daycare
- 7 Your Dog's Best Friend

SHOPPING

- 1 Nicollet Mall
- 2 Target

643 N 5th St
 Minneapolis, MN 55401
 JunctionFlats.com

*Subject to change, error and/or deletion. 1/20