



JUNCTION FLATS



Modern Kitchens



Skyline Views

COMMUNITY AMENITIES

- **Expansive Pool Deck:** with cabanas, large screen TVs and fire pits
- **Sky Lounge:** with demonstration kitchen and access to Sky Deck
- **24-hour Fitness Center:** with Wellbeats
- **Yoga and Spin Studio**
- **Pet-friendly Community:** huge private dog park and on-site pet spa
- **Resident Lounge:** with billiards and fireplace
- **Conference Room**
- **Grilling Stations**
- **Bicycle Storage and Repair Station**
- **Underground Garage Parking**
- **24-hour Package Lockers**

INTERIOR FEATURES

- **Expansive Floor Plans:** studio, one and two-bedroom apartments
- **Hardwood-style or Concrete Floors**
- **Stainless Steel Appliances**
- **Modern Kitchens:** granite countertops and tile backsplash
- **42" Flat Panel Cabinets:** espresso finish
- **Kitchen Islands***
- **Gas Ranges**
- **Pendant and Track Lighting:** in kitchen
- **Ceiling Fans**
- **Floor-to-ceiling Windows**
- **Contemporary Bathrooms:** framed mirrors
- **Double Vanity***
- **Soaking Bathtubs:** with tile surround
- **Washer and Dryer Included**
- **Large Walk-in Closets***
- **State-of-the-art Keyless FOB Locks**
- **Individual Programmable Thermostats**
- **9' or 15' Ceilings**
- **Patios and Balconies**
- **Skyline Views***

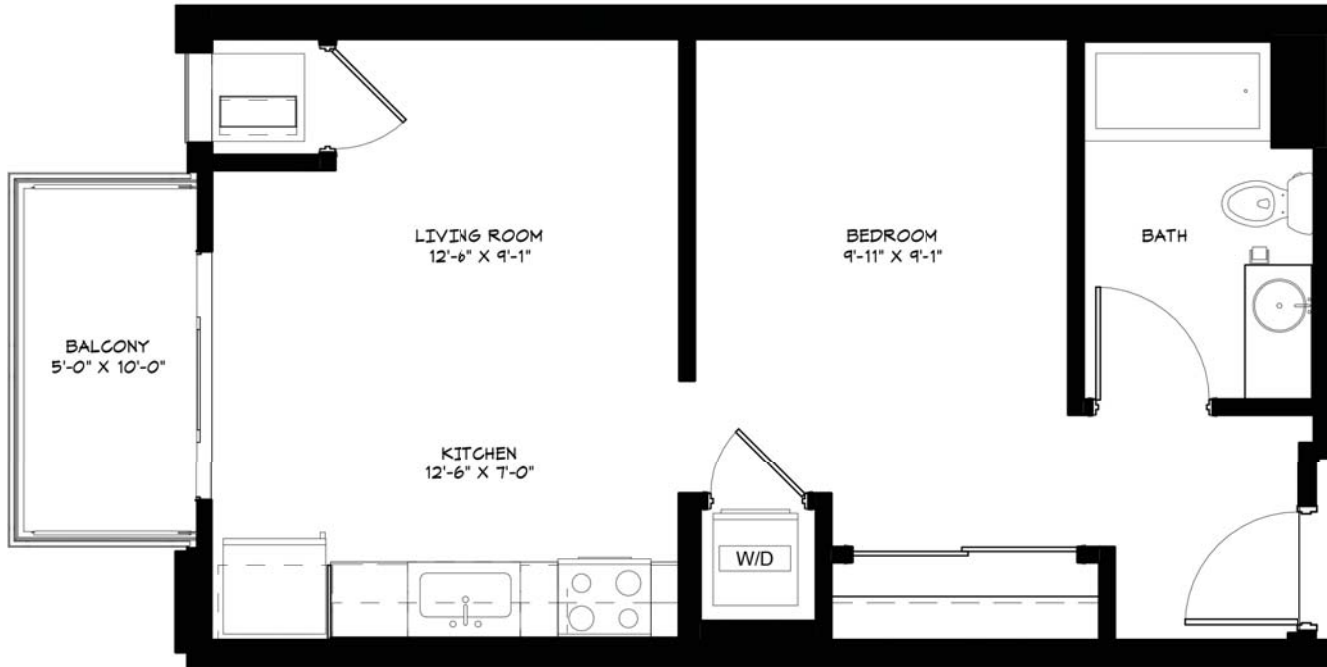
*In Select Homes



Resident Lounge

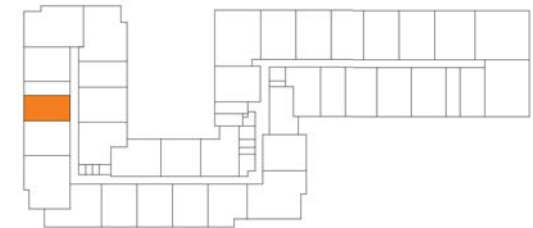
CONVENIENCES

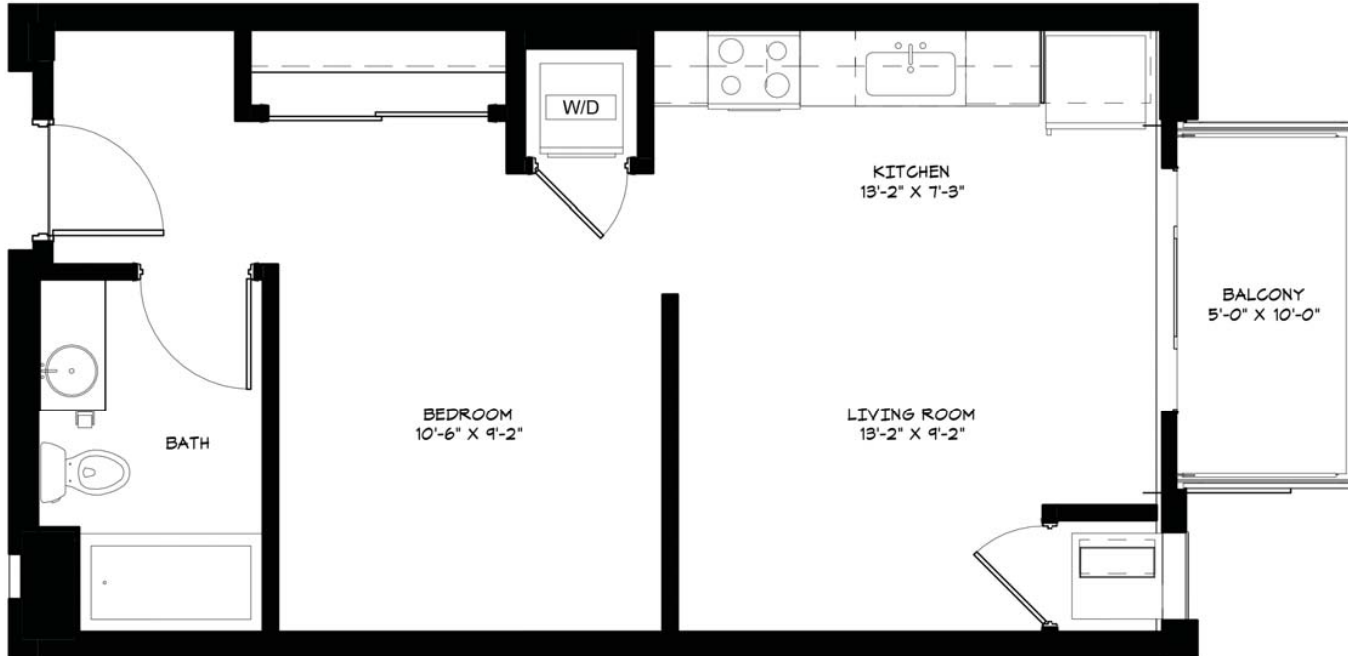
- **Central Location:** in the North Loop neighborhood and a short drive to downtown Minneapolis
- **Convenient Access:** one and a half blocks to the Skyway
- **Freeway Accessibility:** convenient access to 1-94 and 1-394
- **Walking and Biking Paths:** nearby access to popular Cedar Lake Trail
- **Nearby Shopping and Dining:** walking distance to breweries, cafes, restaurants, farmers market and shops
- **Convenient Transit:** two blocks to Target Field Light Rail Station and Bike Share Program



NOTES

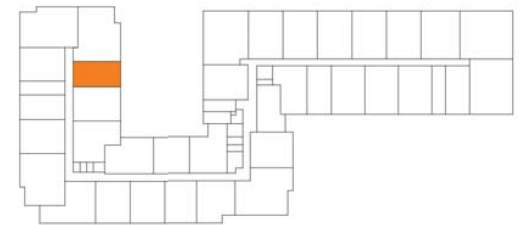
LEVELS 2-6



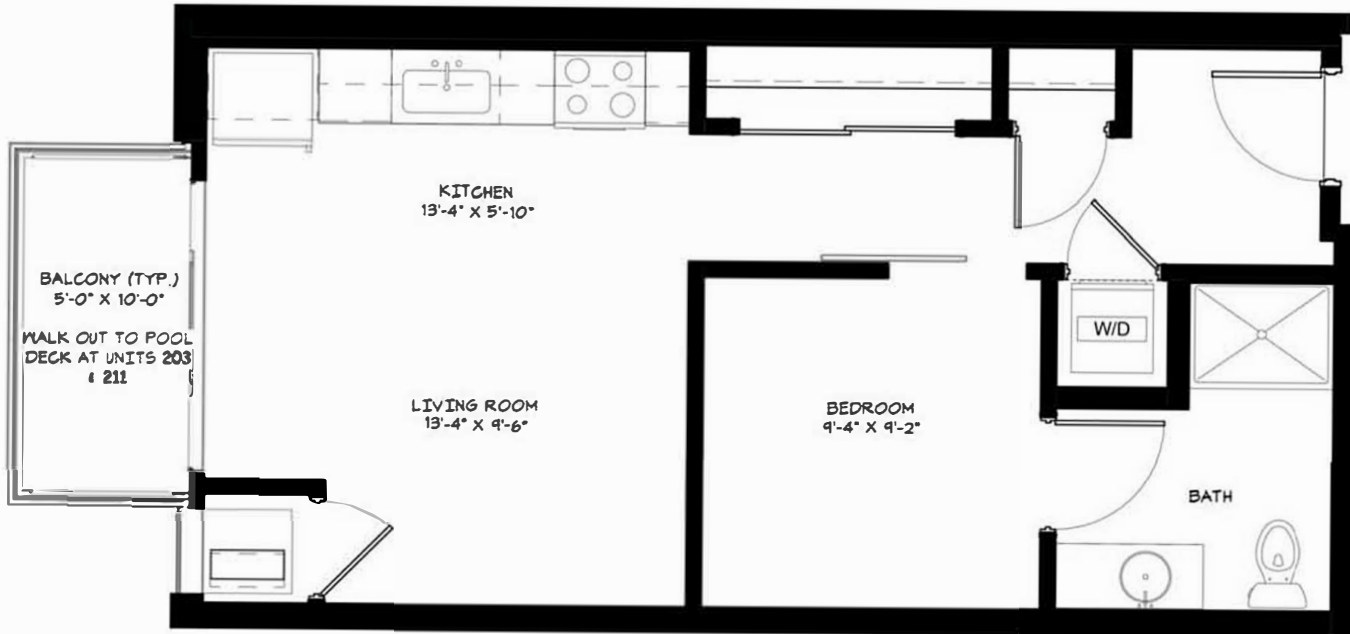


NOTES

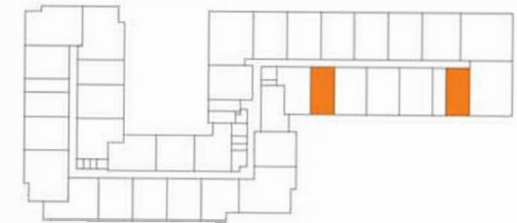
LEVELS 2-6

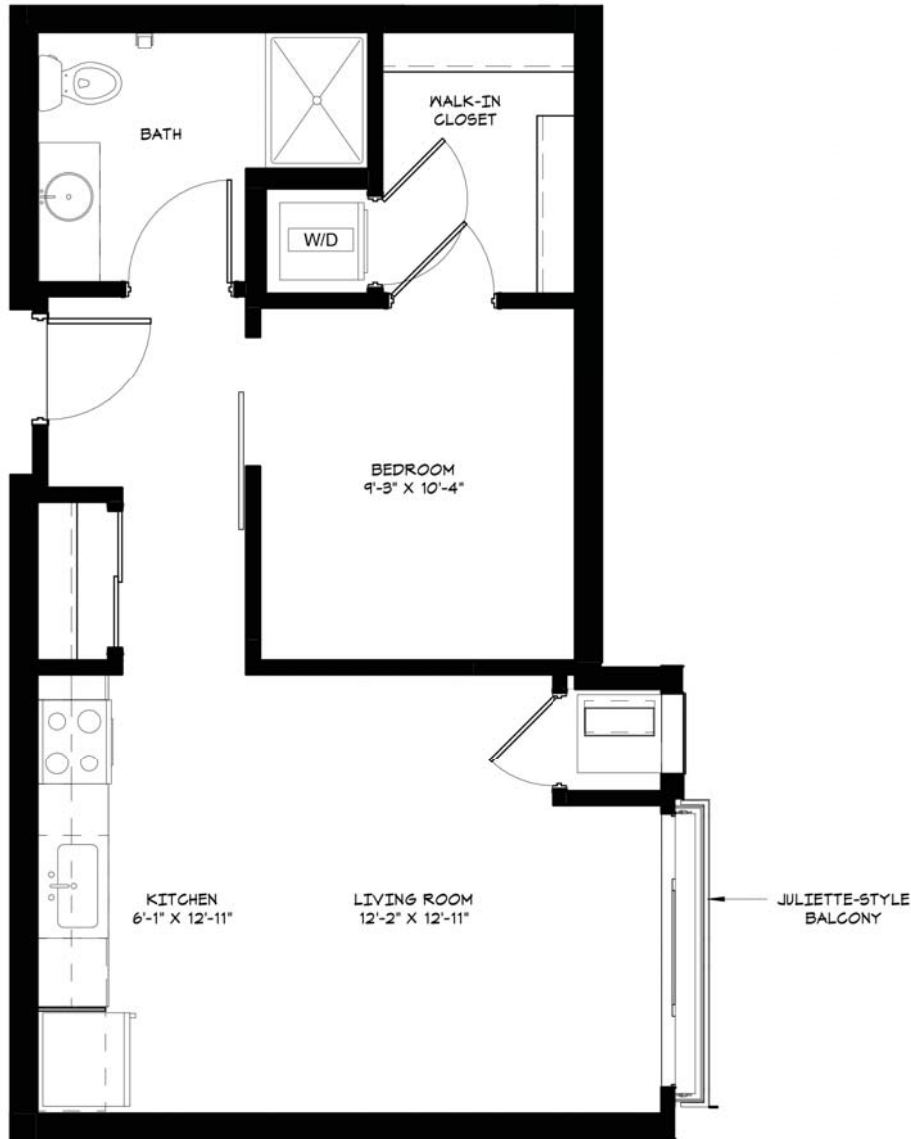


NOTES



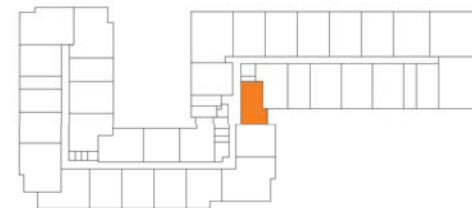
LEVELS 2-6



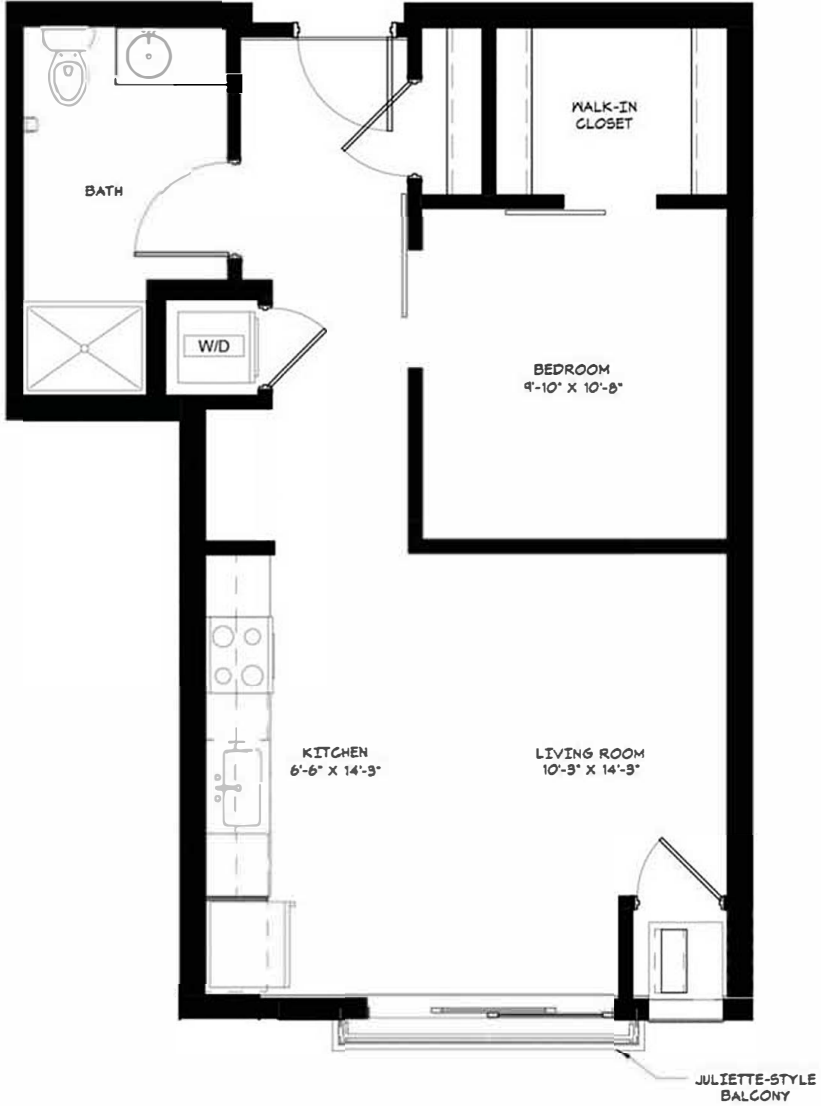


NOTES

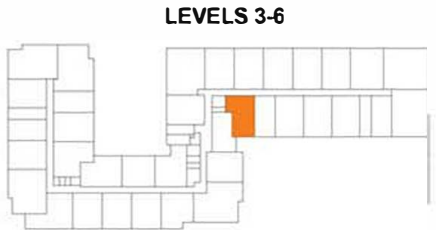
LEVELS 3-6



LIGHT RAIL V
STUDIO | 643 SF



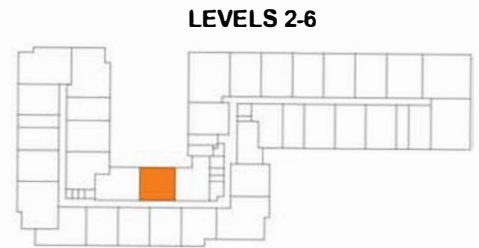
NOTES



METRO I
1 BEDROOM / 1 BATH | 649 SF

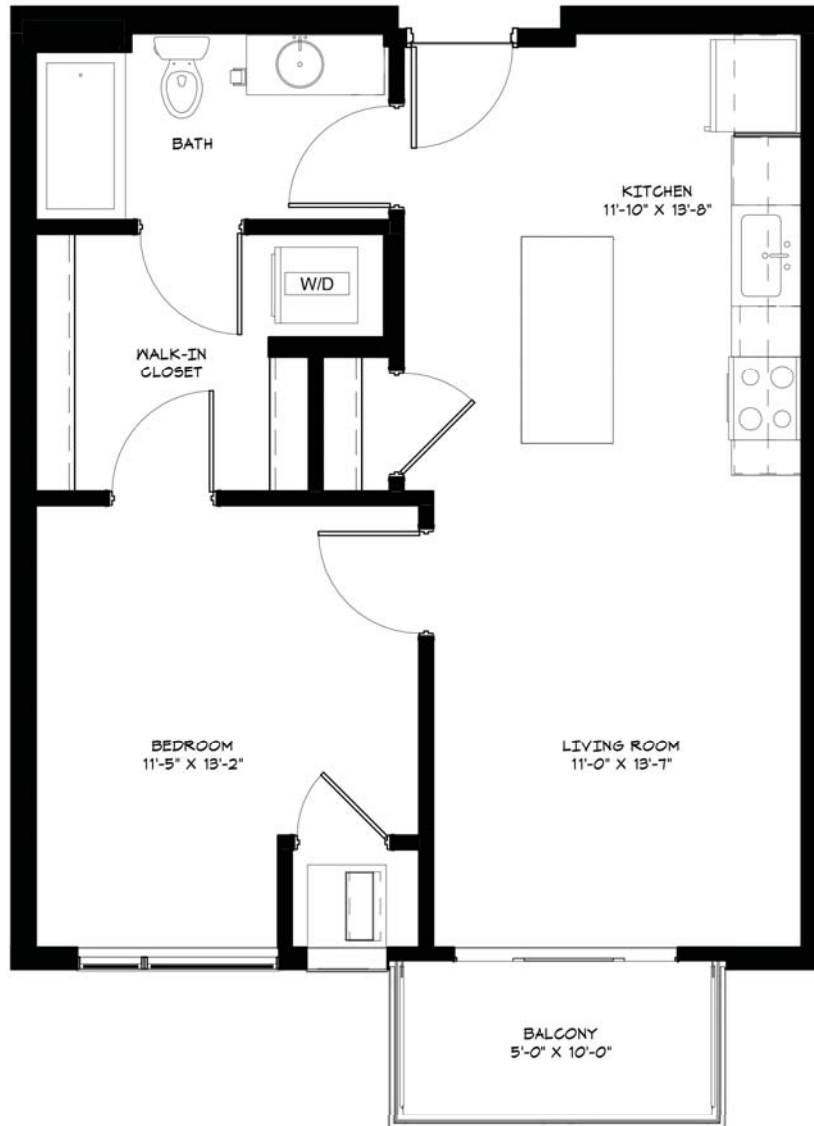


NOTES



METRO II

1 BEDROOM / 1 BATH | 670 SF

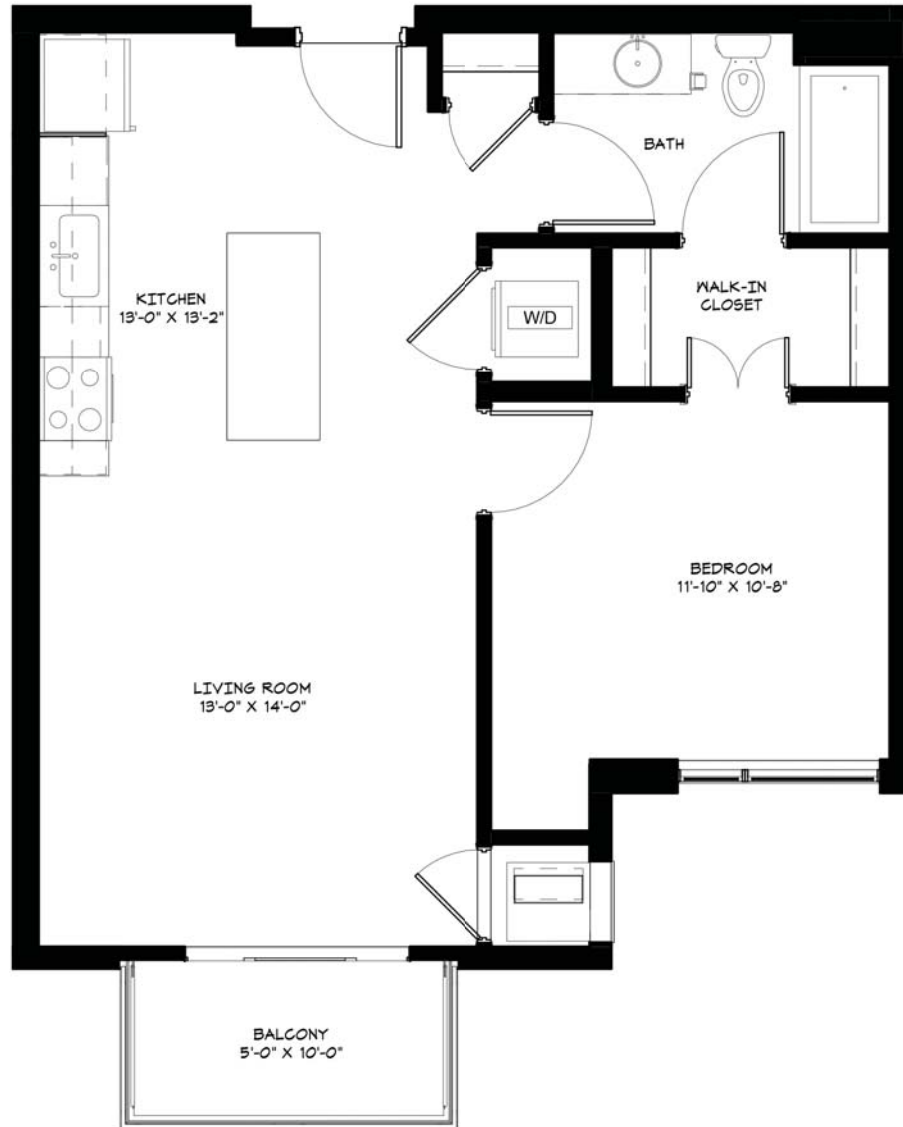


NOTES



METRO III

1 BEDROOM / 1 BATH | 693 SF



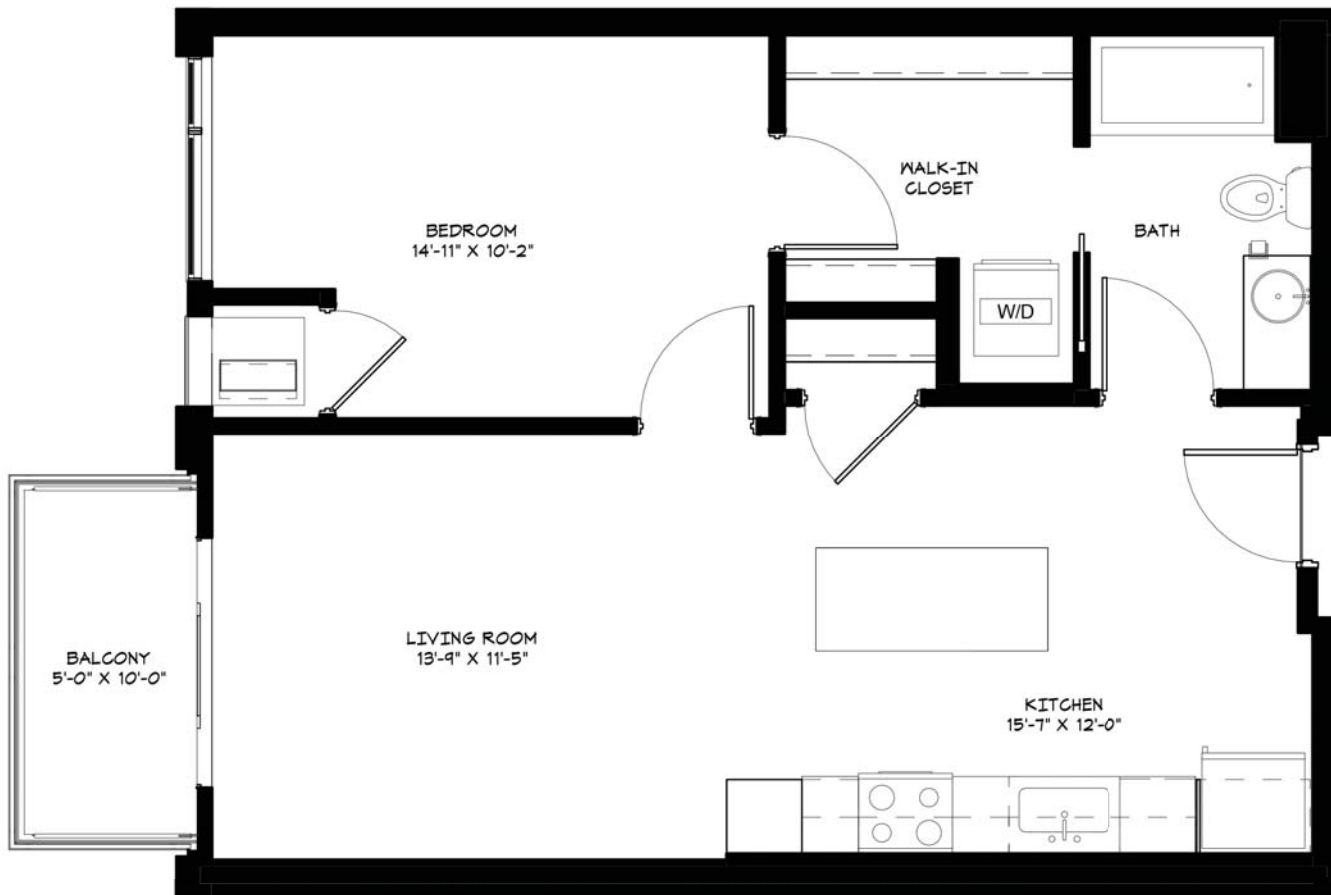
NOTES

LEVELS 2-6



METRO IV

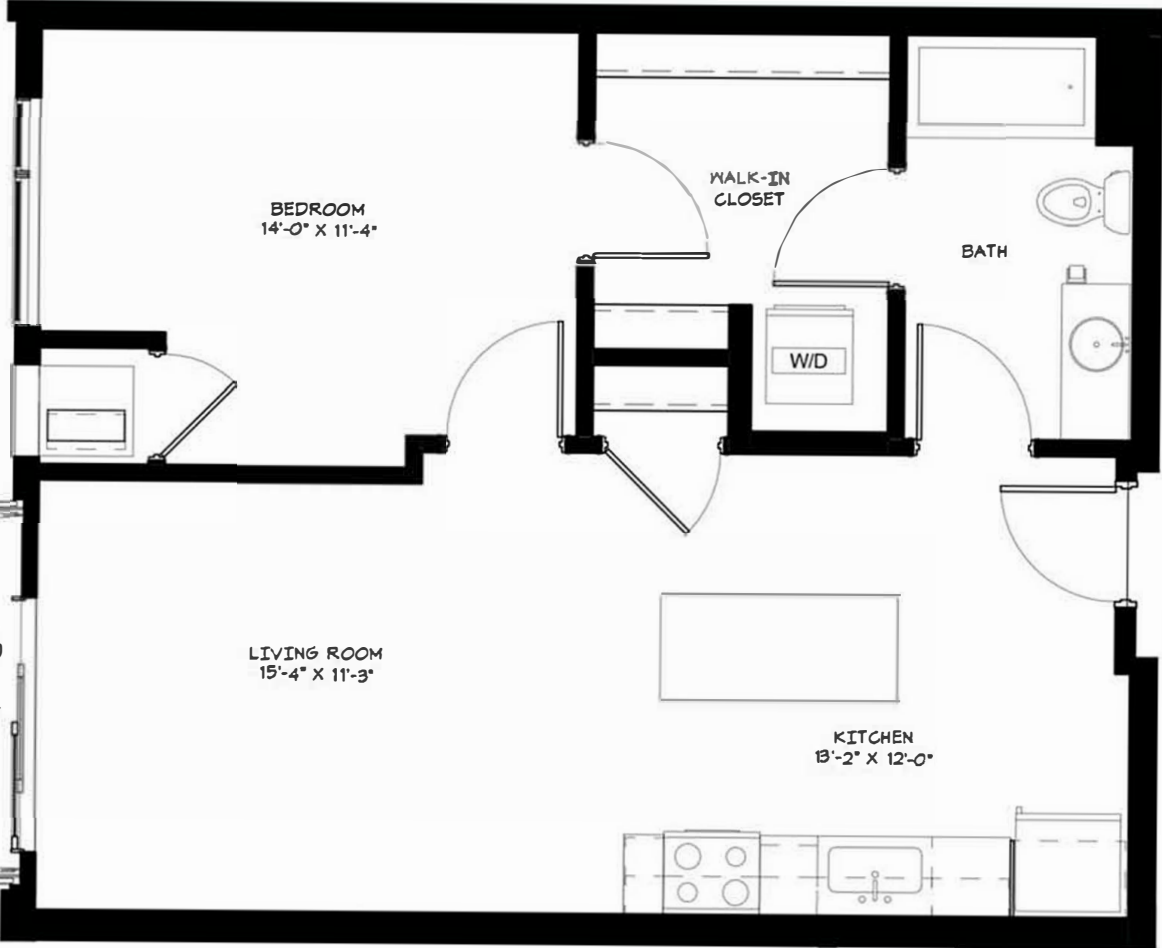
1 BEDROOM / 1 BATH | 706 SF



NOTES

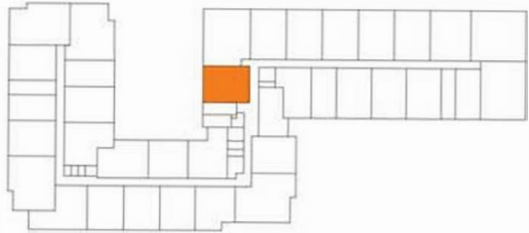
LEVELS 2-6

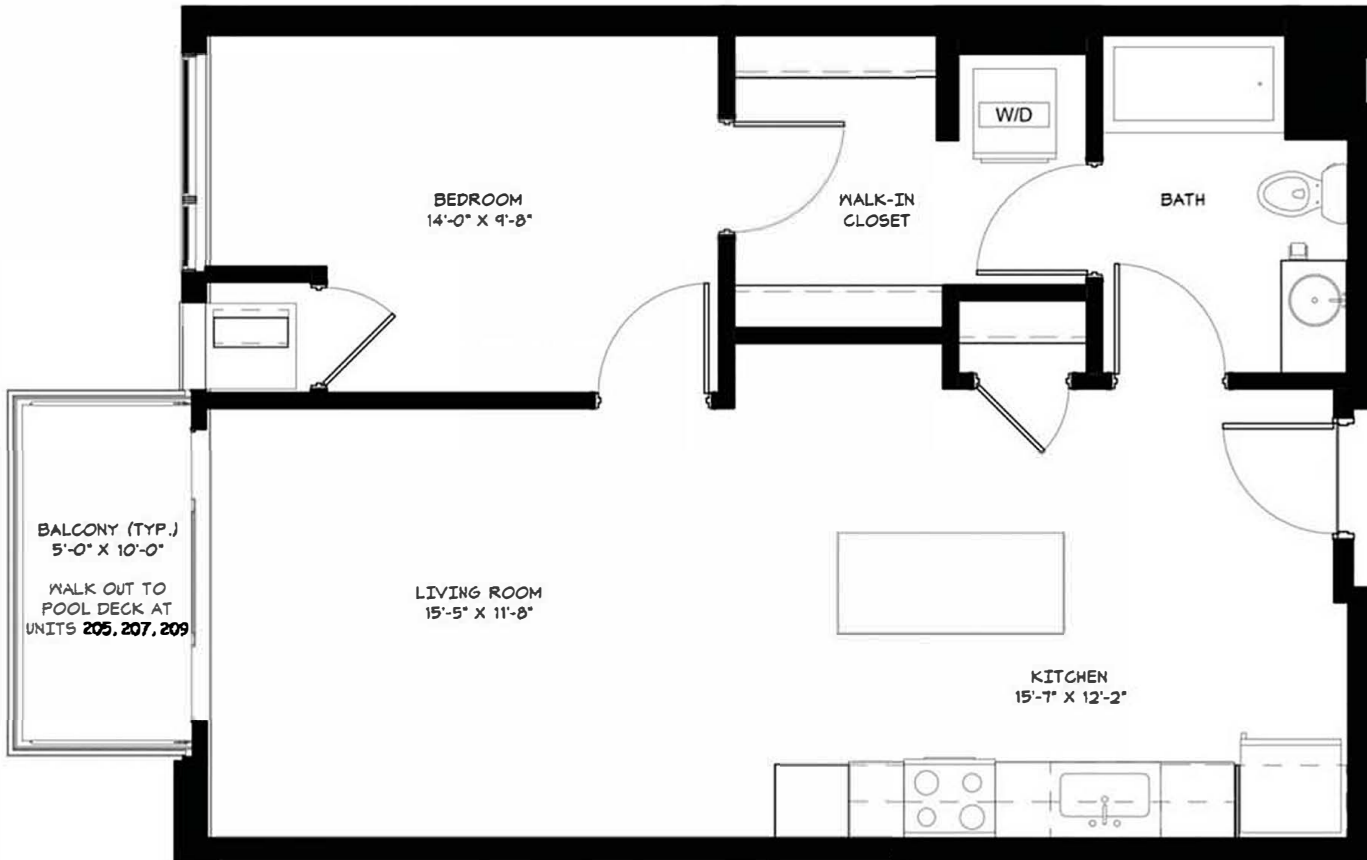




NOTES

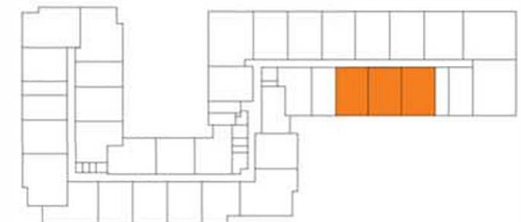
LEVELS 2-6

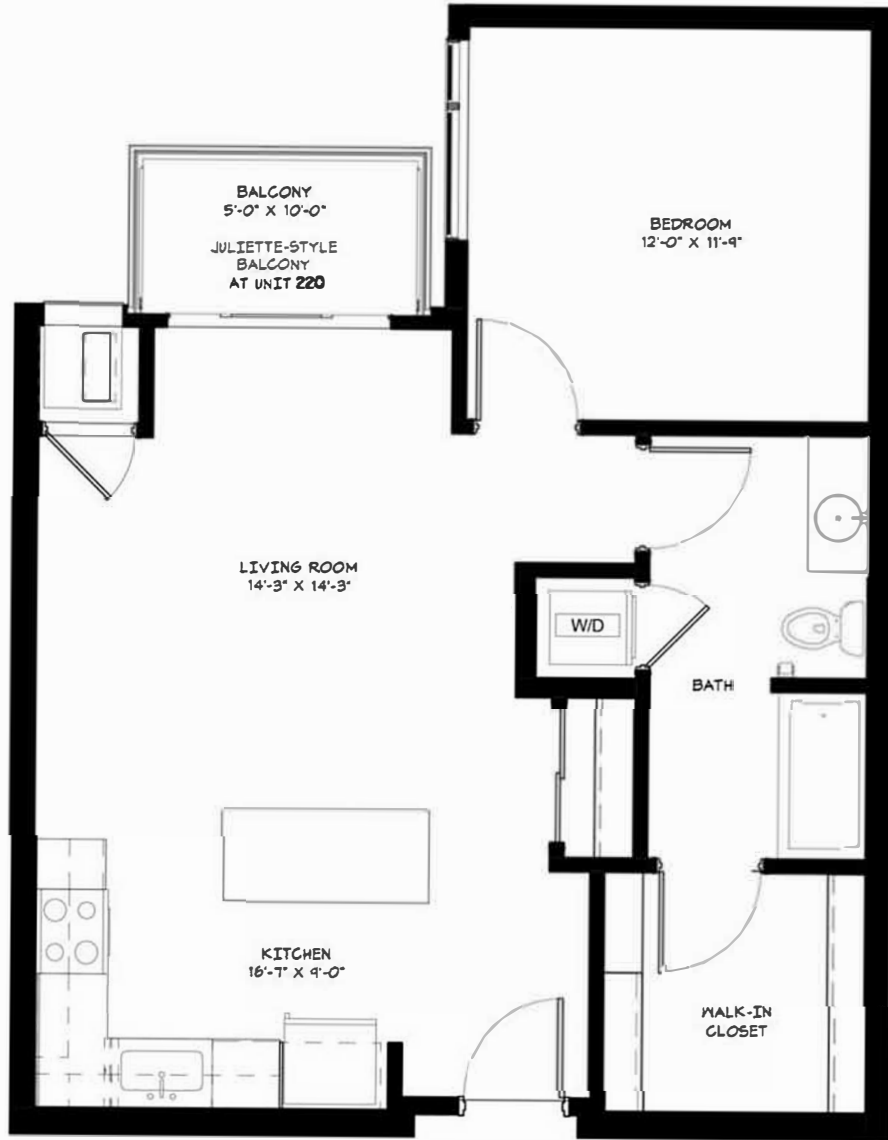




NOTES

LEVELS 2-6

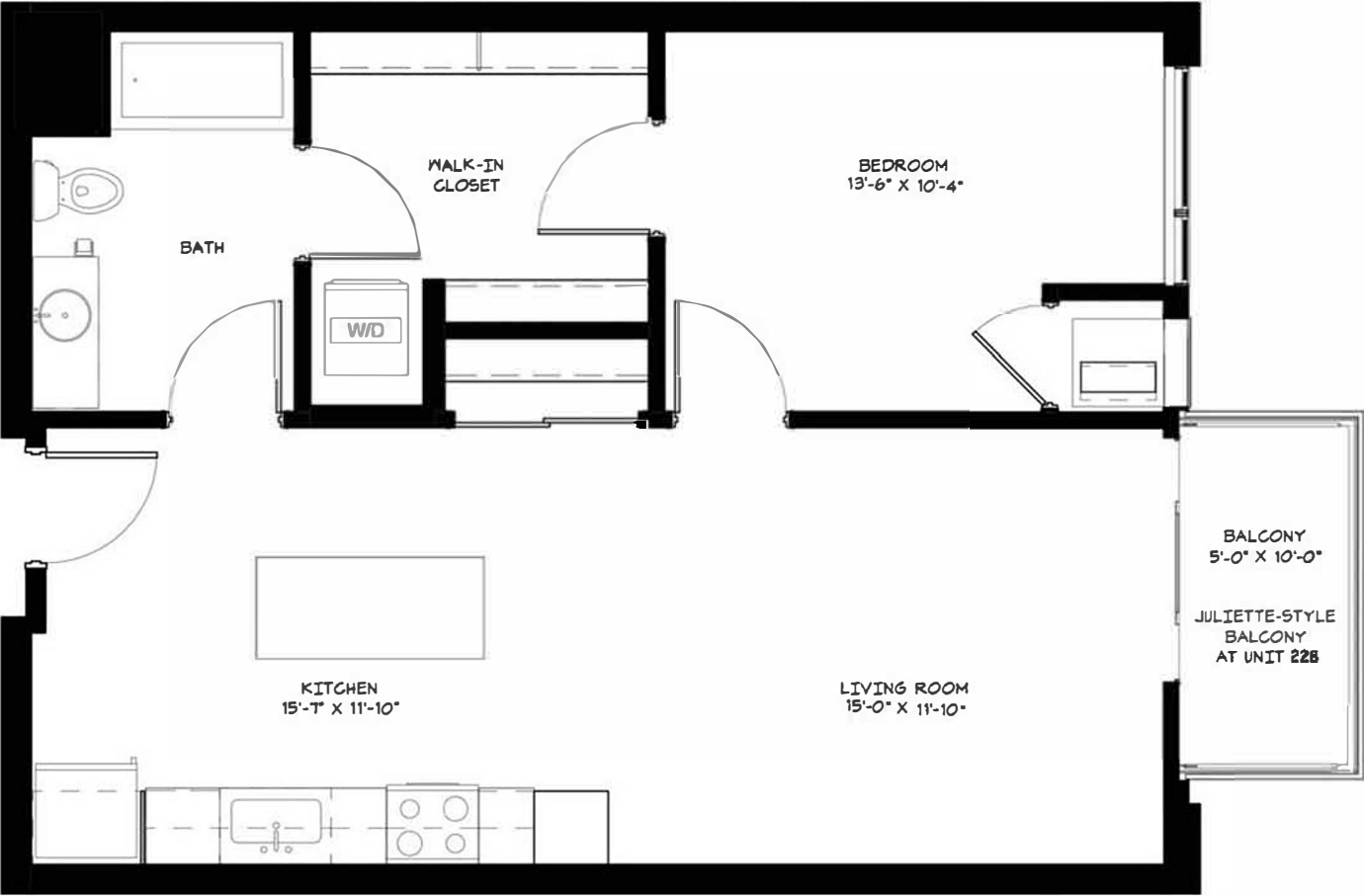




NOTES

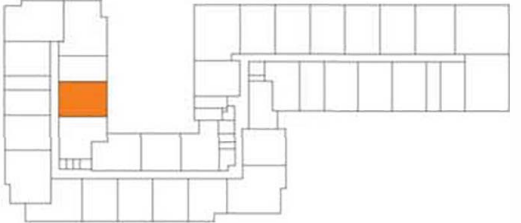
LEVELS 2-6





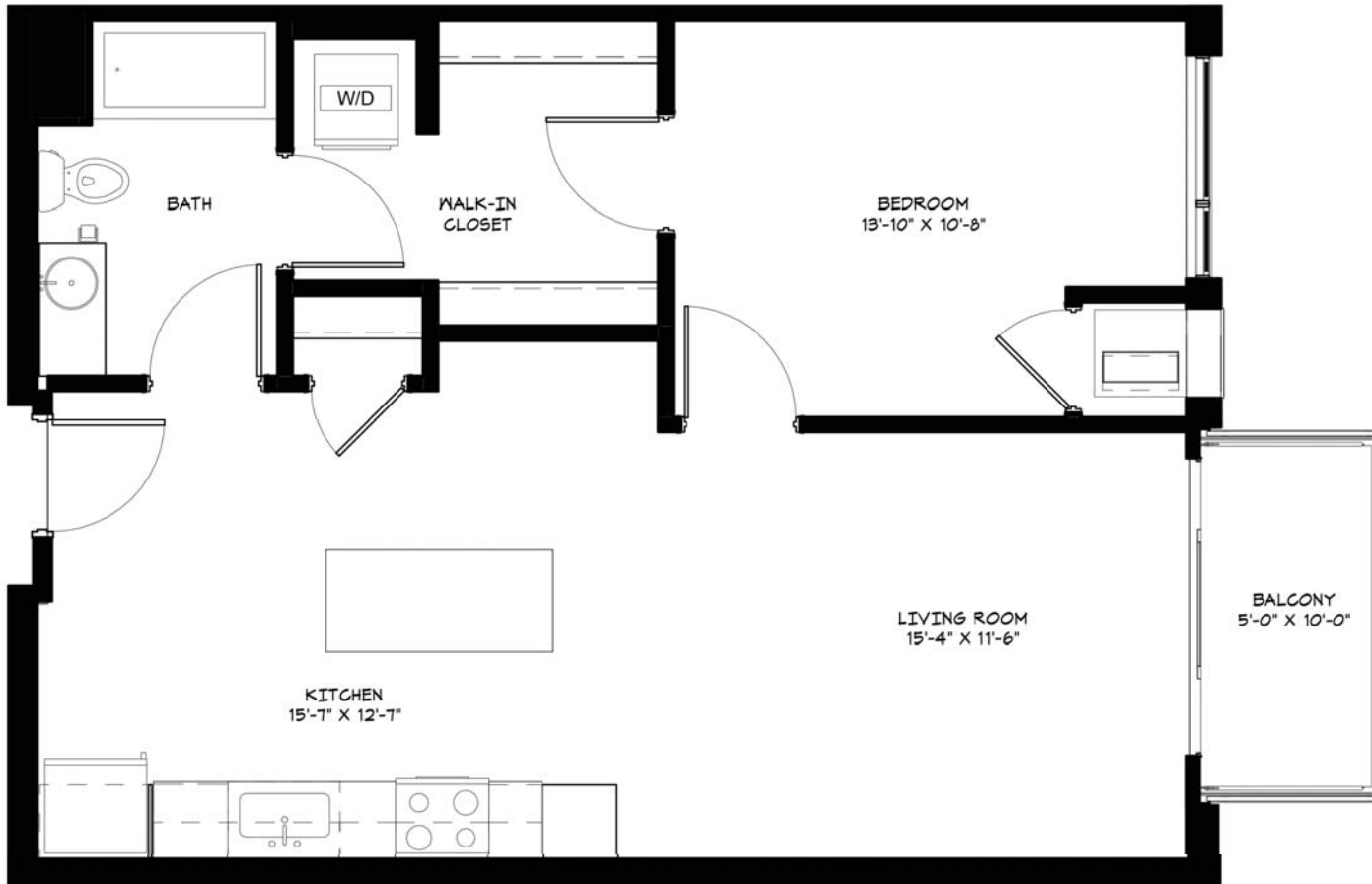
NOTES

LEVELS 2-6



METRO IX

1 BEDROOM/1 BATH | 753 SF

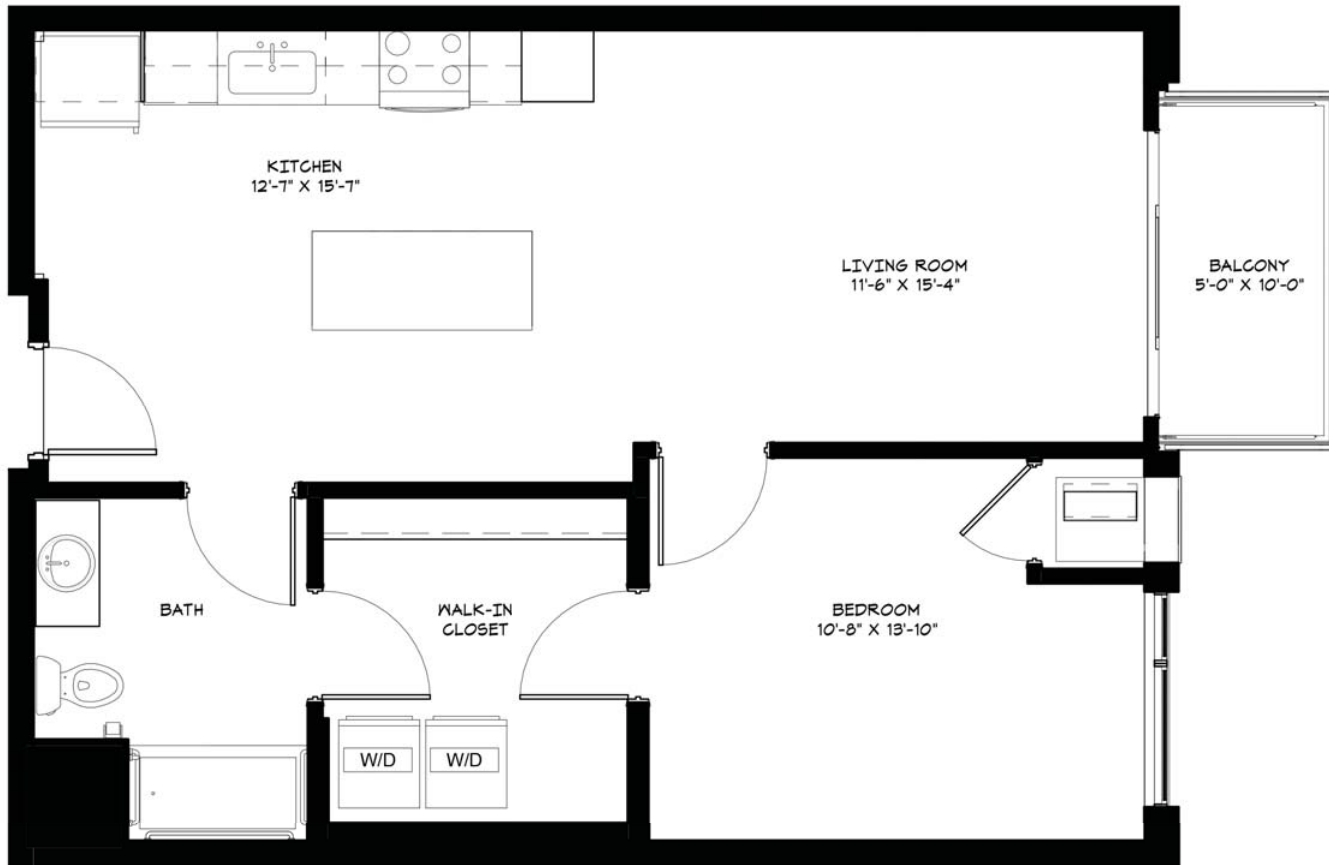


NOTES



METRO X

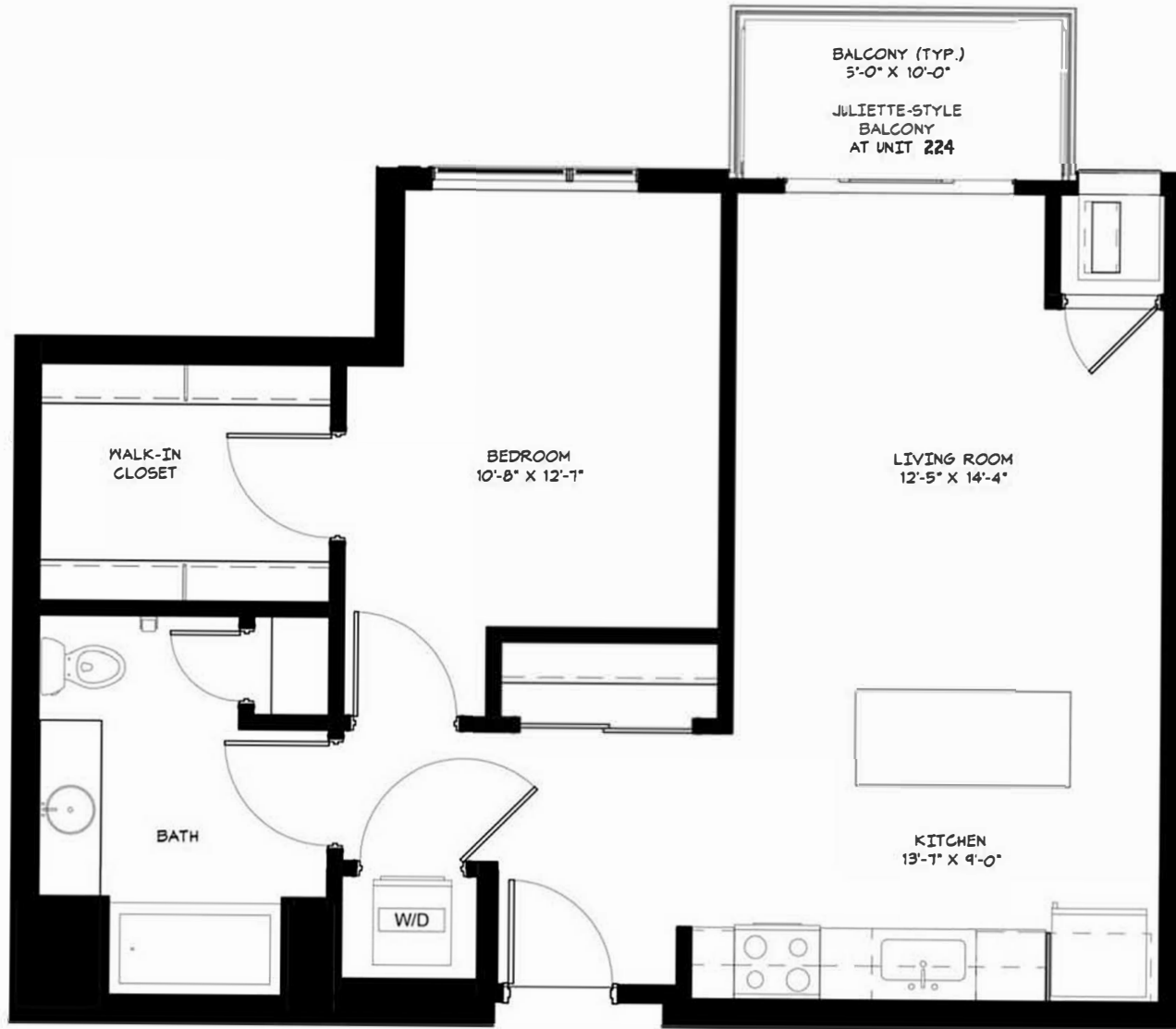
1 BEDROOM/1 BATH | 753 SF



NOTES

LEVELS 2-4





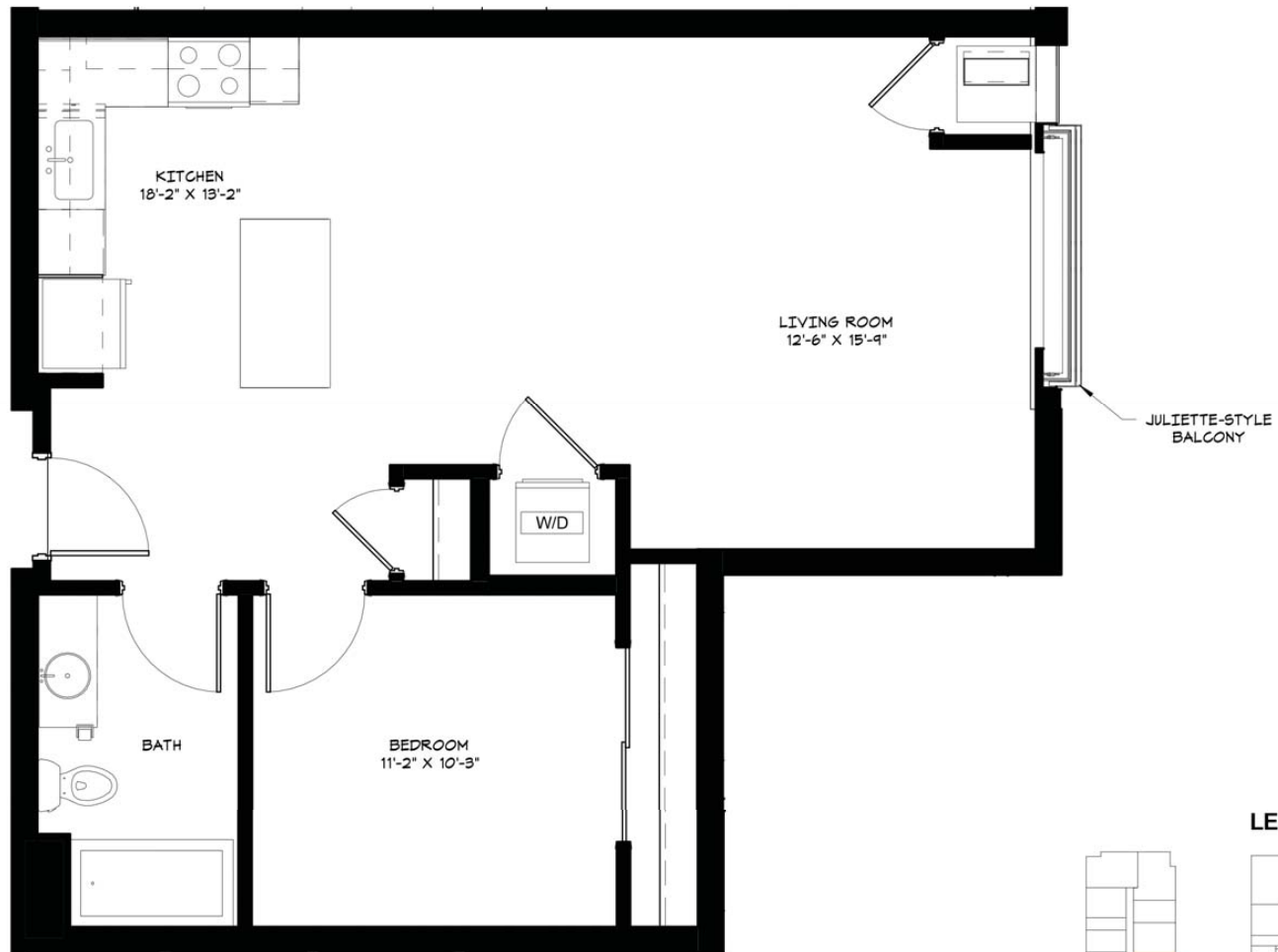
NOTES

LEVELS 2-6



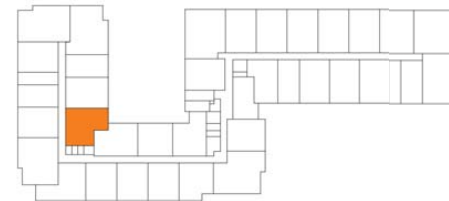
METRO XII

1 BEDROOM/1 BATH | 774 SF



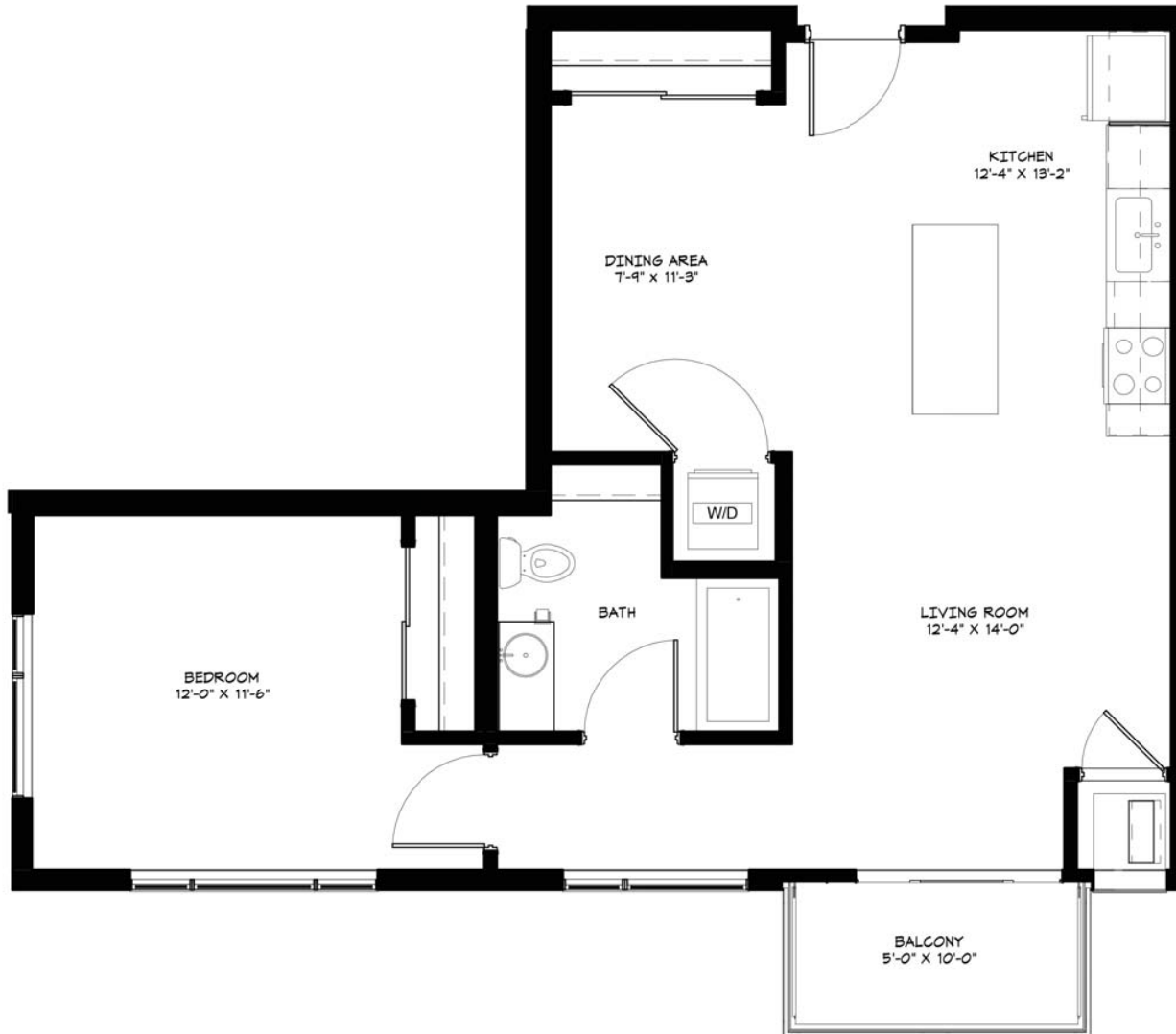
NOTES

LEVELS 2-6



METRO XIII

1 BEDROOM / 1 BATH | 805 SF



NOTES

LEVELS 2-6

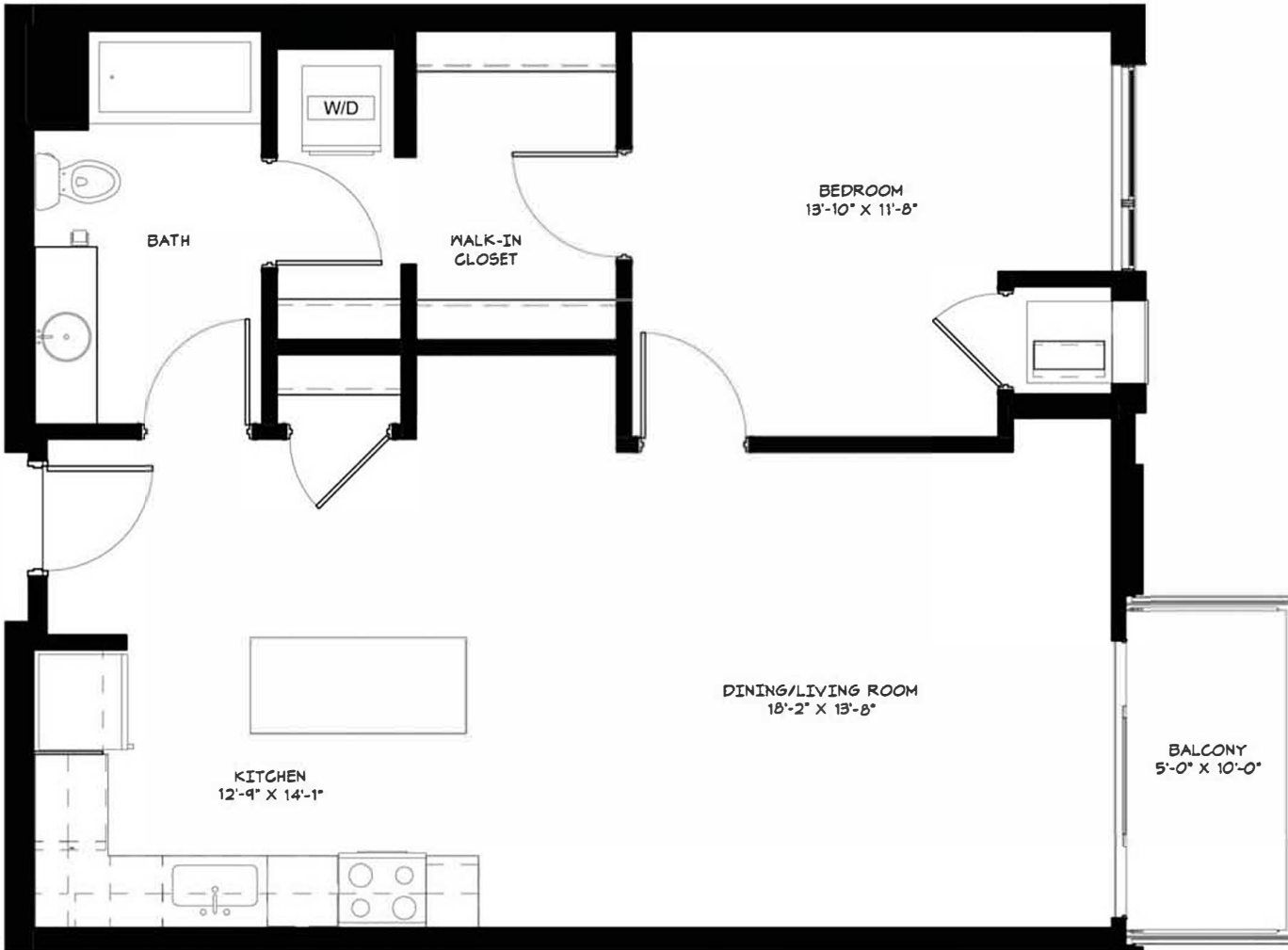


JF JUNCTION FLATS

643 N FIFTH ST | MINNEAPOLIS

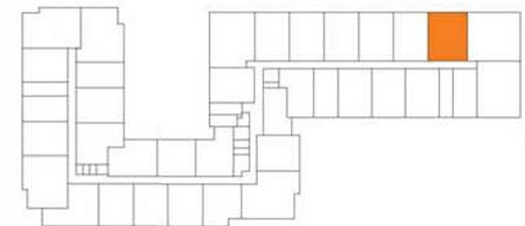
METRO XIV

1 BEDROOM/1 BATH | 855 SF



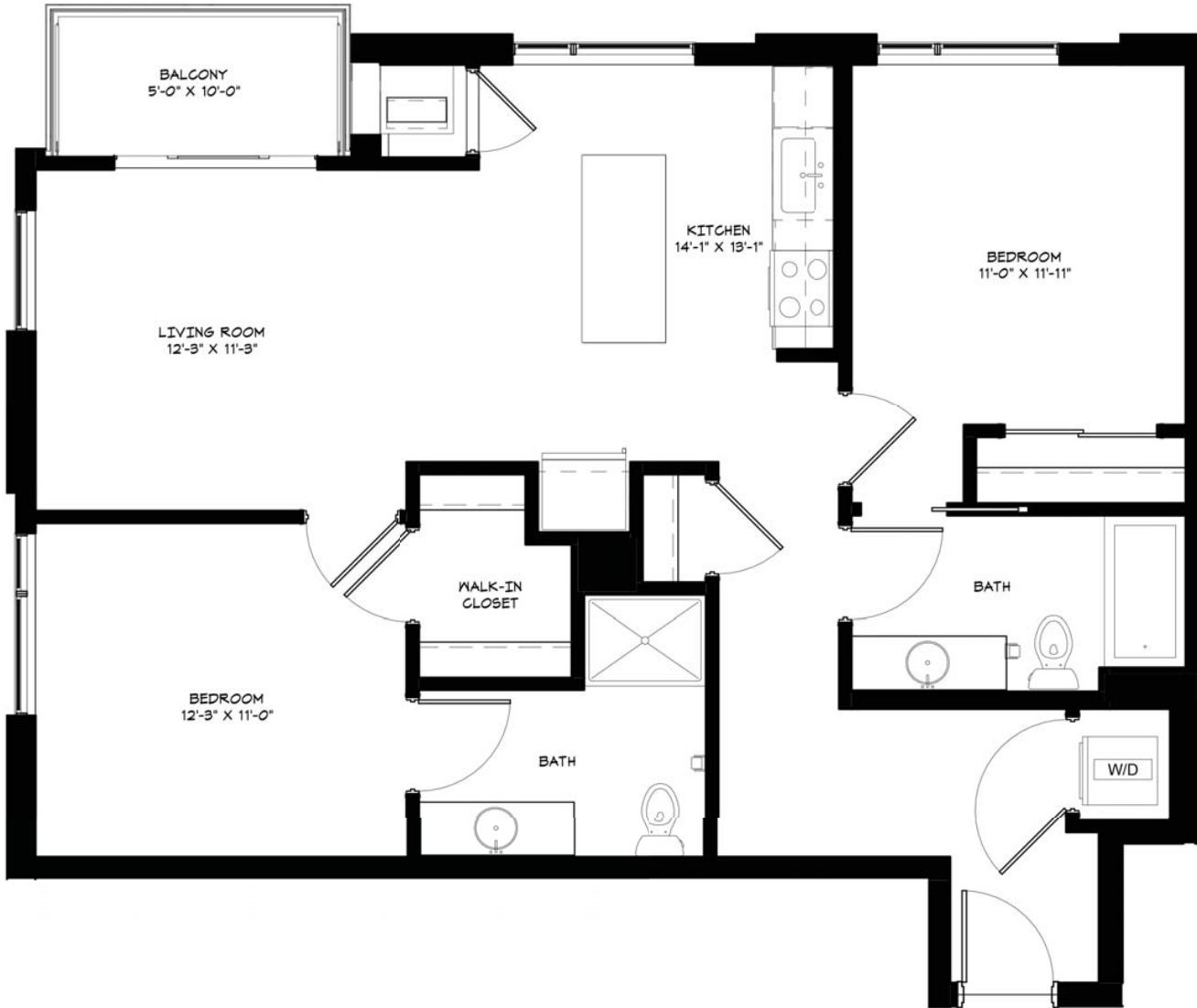
NOTES

LEVELS 2-6



INTERCHANGE I

2 BEDROOMS/2 BATHS | 1,033 SF



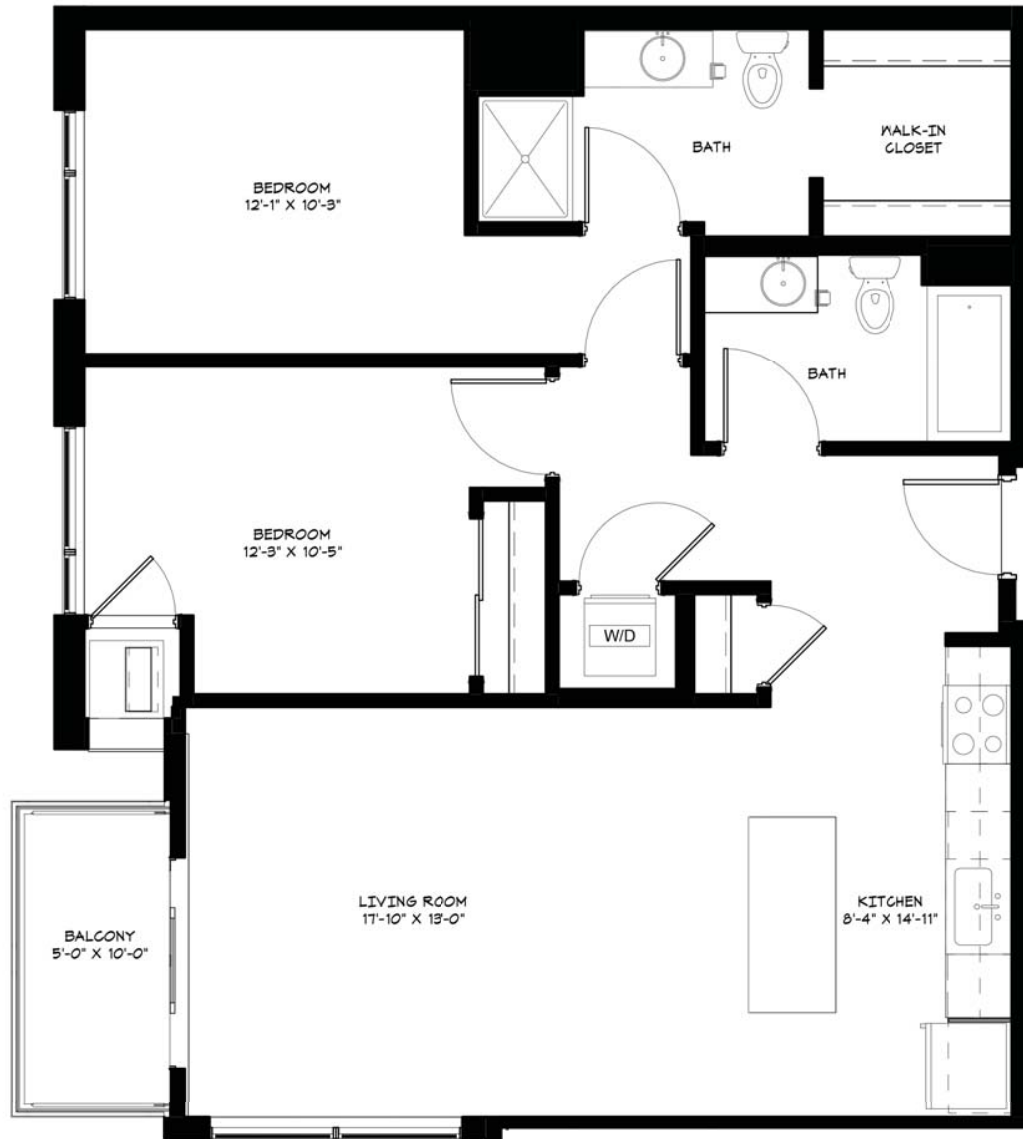
NOTES

LEVELS 2-6



INTERCHANGE II

2 BEDROOMS/2 BATHS | 1,036 SF



NOTES

LEVELS 2-6



INTERCHANGE III

2 BEDROOMS/2 BATHS | 1,051 SF



NOTES

LEVELS 2-6



INTERCHANGE IV

2 BEDROOMS/2 BATHS | 1,071 SF



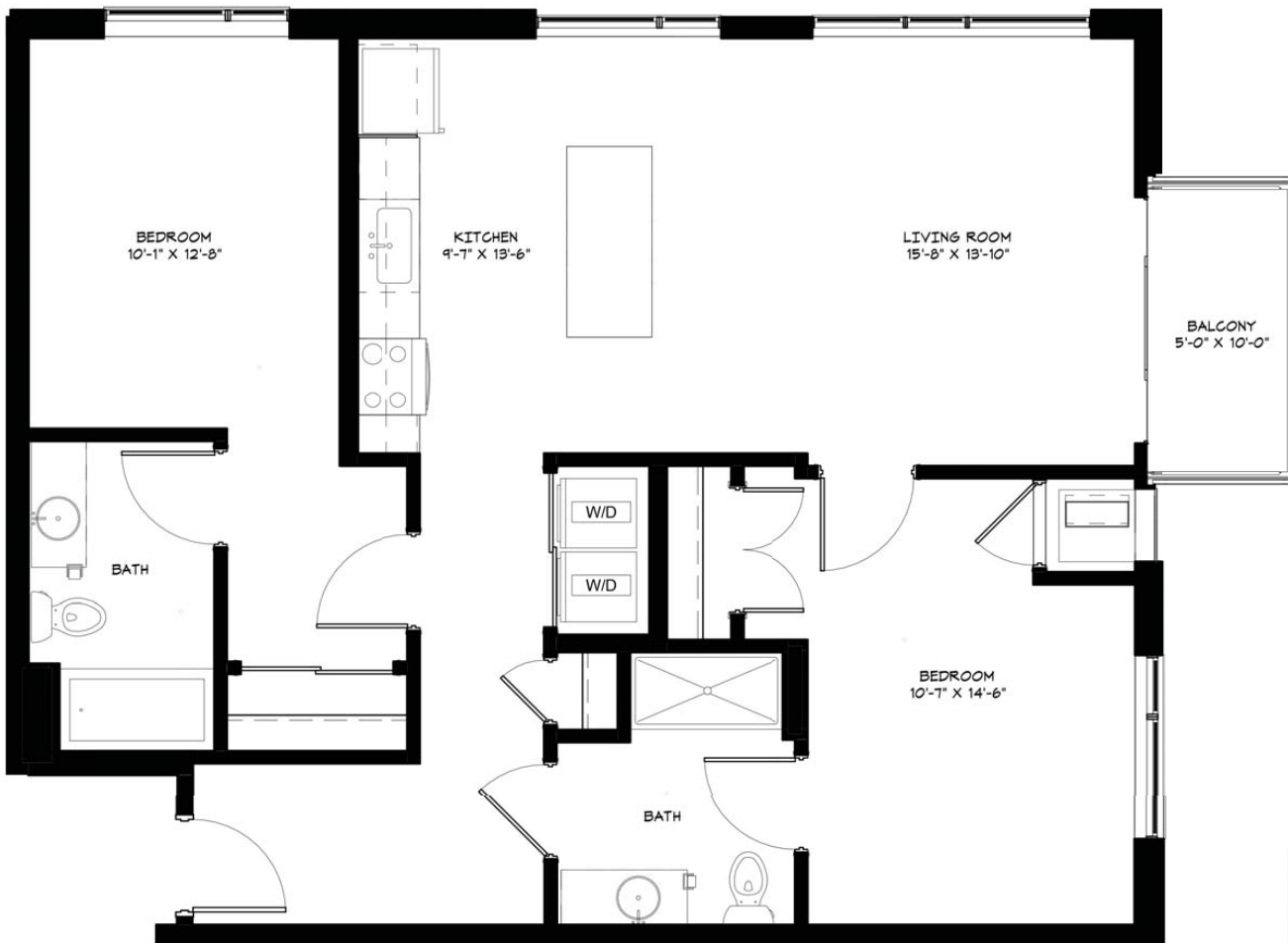
NOTES

LEVELS 3-6

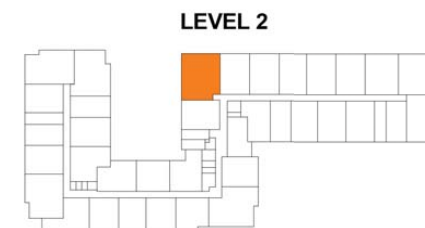


INTERCHANGE V

2 BEDROOMS/2 BATHS | 1,071 SF



NOTES



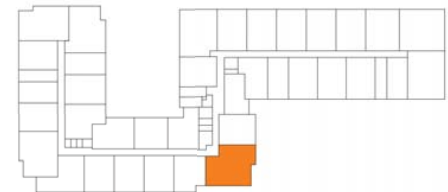
INTERCHANGE VI

2 BEDROOMS/2 BATHS | 1,095 SF



NOTES

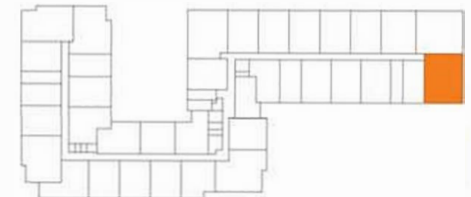
LEVELS 3-5





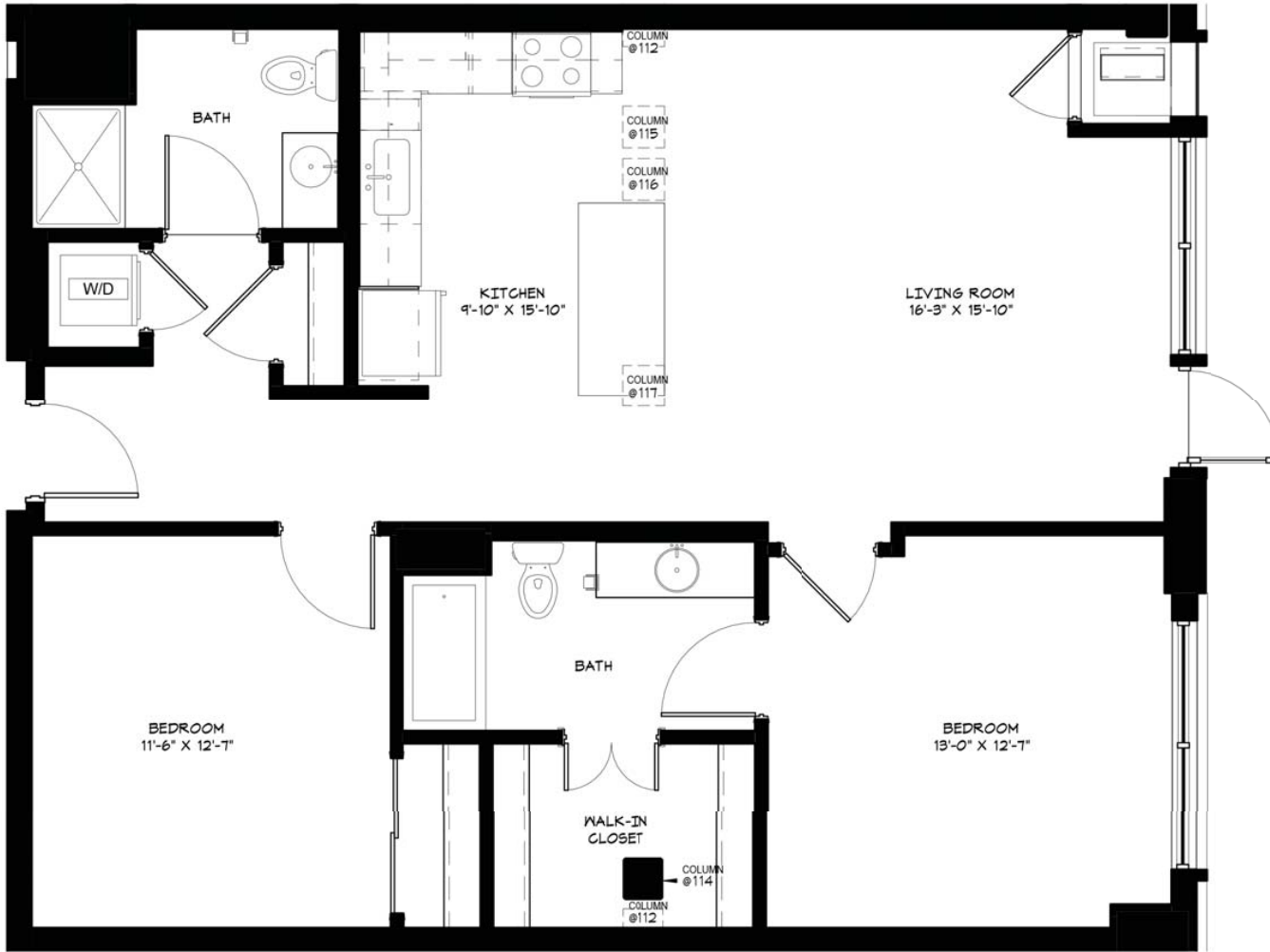
NOTES

LEVELS 2-6



INTERCHANGE VIII

2 BEDROOMS/2 BATHS | 1,122 SF



NOTES

*NOTE VARIATION IN COLUMN LOCATIONS



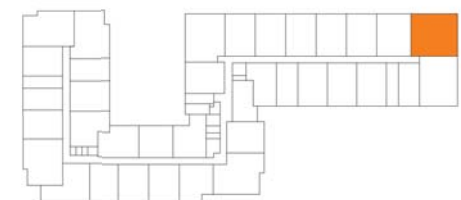
INTERCHANGE IX

2 BEDROOMS/2 BATHS | 1,132 SF



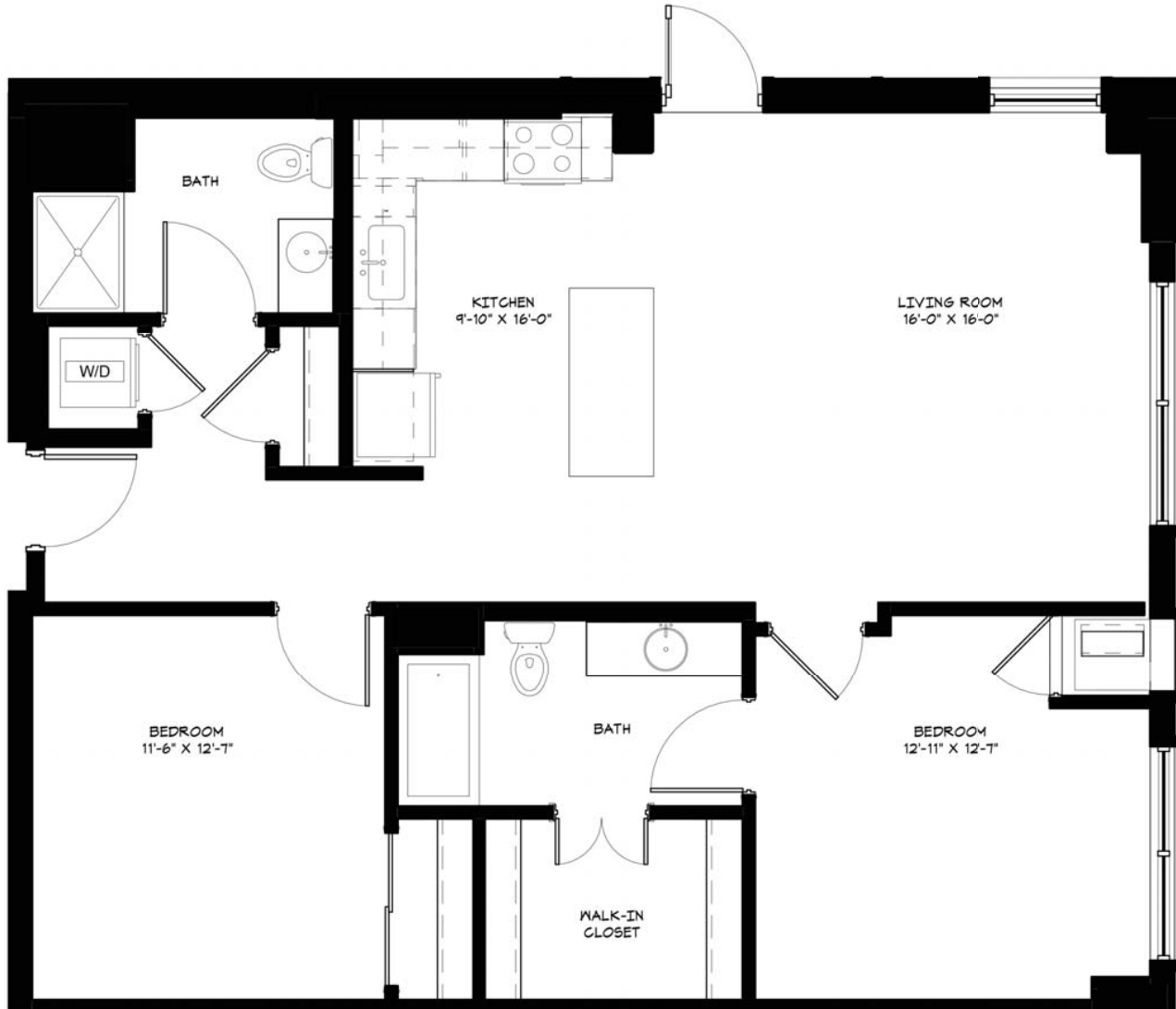
NOTES

LEVELS 2-6



INTERCHANGE X

2 BEDROOMS/2 BATHS | 1,135 SF



NOTES

LEVEL 1



INTERCHANGE XI

2 BEDROOMS/2 BATHS | 1,135 SF



NOTES

LEVEL 1

