

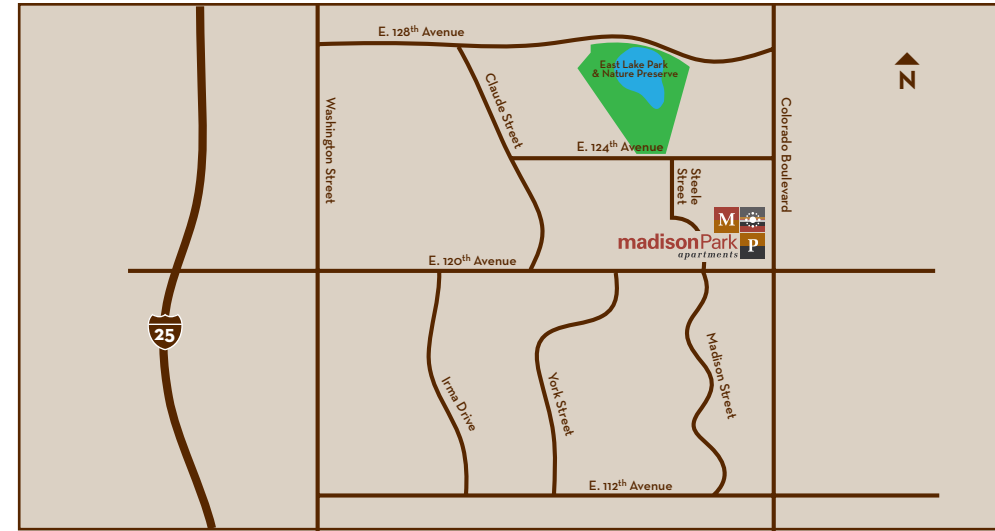
# INSPIRED LIVING

FIND YOUR OASIS from the hectic, fast pace life brings you. Welcome to your inviting apartment home with features that are both dramatic in design and architecture with unprecedented amenities. The community is surrounded by countless options for dining, shopping and recreation.

No matter how you spend your time, Madison Park has something for everyone. You'll see it in the amenities you enjoy each day and in the thoughtful way the community meets your every need. Make Madison Park your haven away from the fast pace that life brings you.

Another distinctive community brought to you by Simpson Property Group, dedicated to impeccable service and extraordinary living.

# IDEAL LOCATION



Madison Park Apartments creates a new standard for living in Thornton. Our convenient location accentuates and accommodates your lifestyle, with easy access to I-25, I-70 and Denver International Airport.

- Located just off of 120<sup>th</sup> Avenue
- 10 Minutes to Downtown Denver
- Walking distance to King Soopers and many restaurants
- Close to East Lake Park and Nature Preserve with walking trails and tennis courts
- Near public transit

IT'S ONE THING TO OFFER a stylish residence. It's quite another to offer the people who live there a level of service that exceeds their expectations. At Simpson Property Group®, we've built our reputation on service. In fact, for several years in a row we've earned the coveted "A List" Award for Service Excellence - a distinction reserved for only a select few firms by the multifamily real-estate industry.

Of course, our biggest reward isn't a plaque on the wall... it's the trust we earn from our residents every day. At Madison Park, you'll be part of a community that we ourselves would be proud to call home. You'll be surrounded by the highest-quality features and unsurpassed amenities; and you'll enjoy a lifestyle unlike anywhere else.



  
**madisonPark**  
apartments

**MadisonParkApts.net**  
3351 East 120<sup>th</sup> Avenue  
Thornton, CO 80233  
303.551.1650

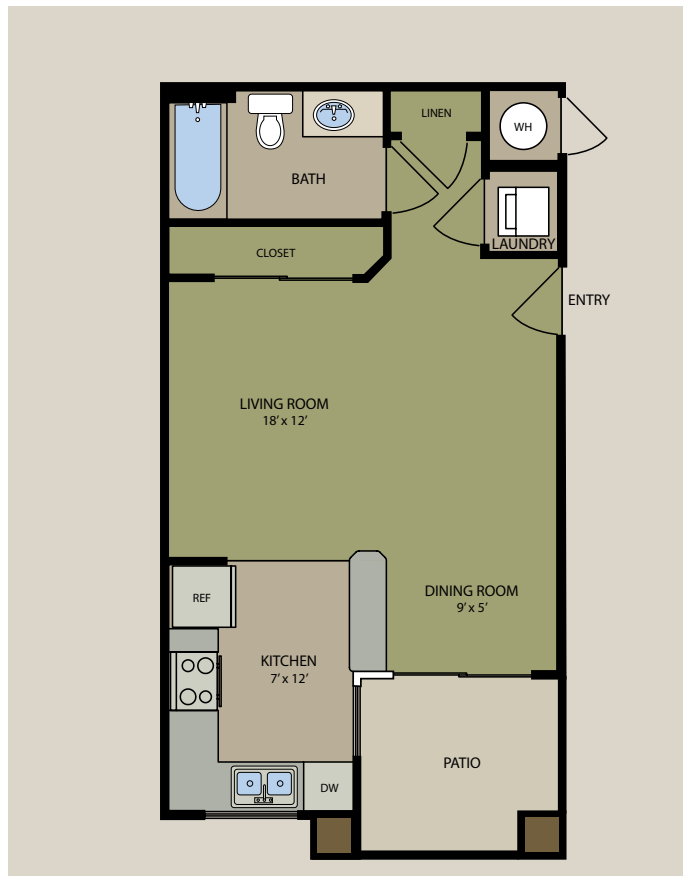




- Clubhouse with WiFi throughout
- Two outdoor swimming pools with sun deck
- Fitness Center with cardio and weight machines
- Business Center with high speed internet access
- Media Room with large screen television
- Two play areas

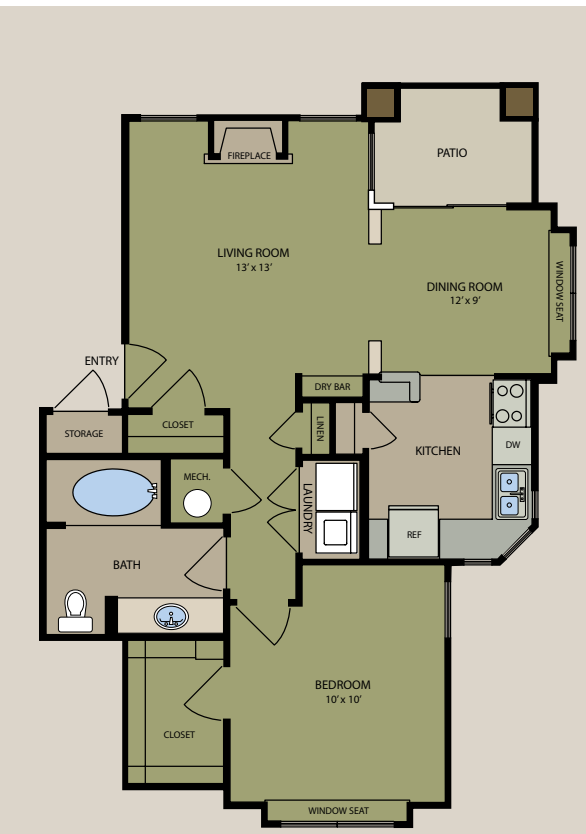


- Studio, one, two and three bedroom apartment homes
- Private corner apartment homes
- Washer & dryer in every home
- Private detached garages available
- Individual patio or balcony
- Window seats\*
- Additional storage space\*
- Spacious walk-in closets
- Ceiling fans in living rooms
- Gas fireplace
- Cable ready
- Pet friendly



CASHMERE • 473 Sq. Ft.  
Studio / 1 Bath

\$ \_\_\_\_\_



CARMEL • 752 Sq. Ft.  
1 Bedroom / 1 Bath

\$ \_\_\_\_\_



MERLOT • 808 Sq. Ft.  
1 Bedroom / 1 Bath

\$ \_\_\_\_\_



GARNET • 958 Sq. Ft.  
1 Bedroom / 1 Bath + Den

\$ \_\_\_\_\_



BLACKBERRY • 1,093 Sq. Ft.  
2 Bedroom / 2 Bath

\$ \_\_\_\_\_



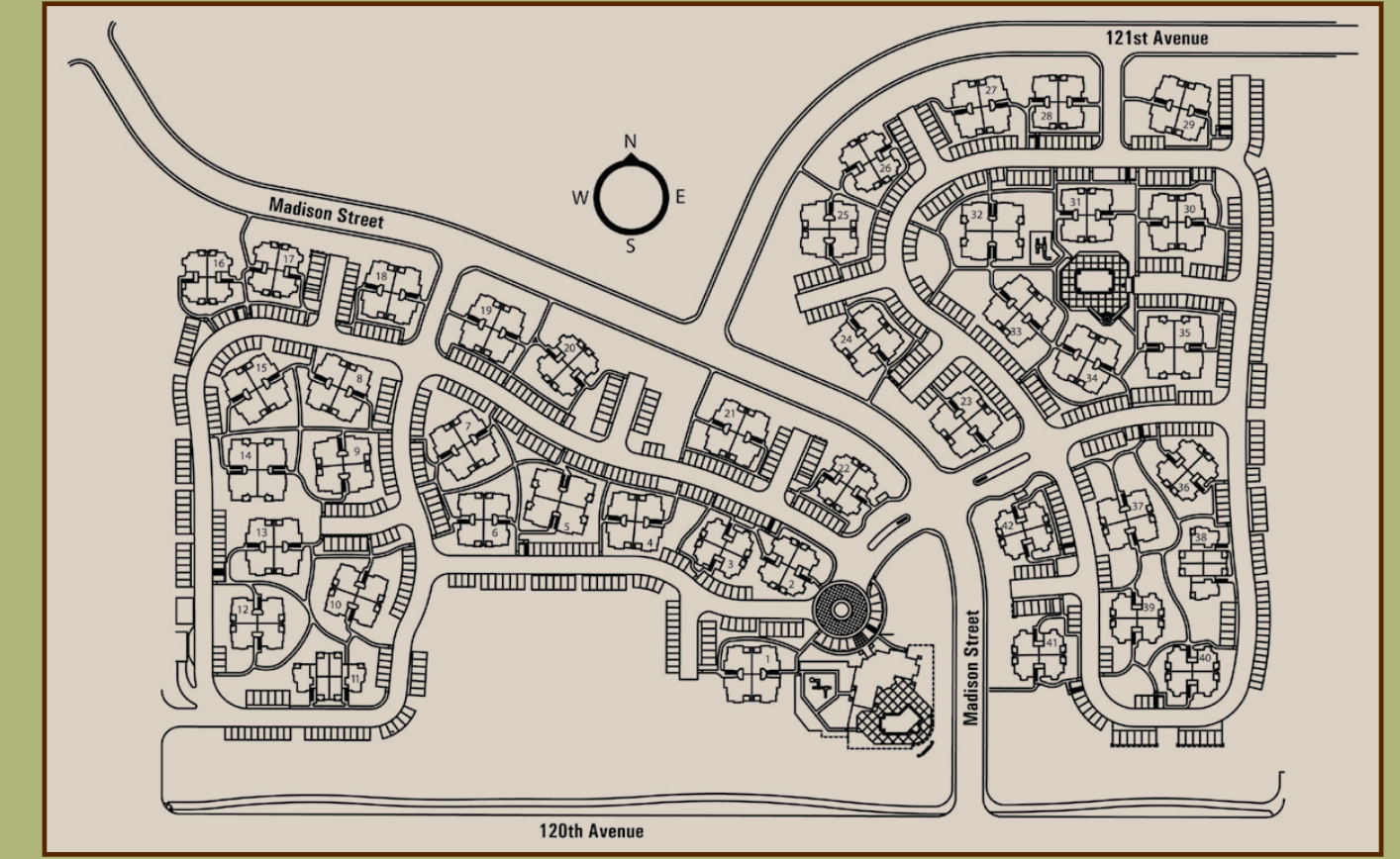
BLOOM • 1,286 Sq. Ft.  
3 Bedroom / 2 Bath

\$ \_\_\_\_\_

Prices change daily. Floor plans are not to scale. Dimensions and square footage may vary.

Come home to Madison Park surrounded by natural beauty and all of the conveniences you'll need. Enjoy lazy afternoons in the resort style swimming pools, or an energizing workout in the Fitness Center. Head to the Media Room to take in a feature film or sporting event. Or simply retreat to the privacy of your spacious apartment home.

There's no time like now to enjoy life—with an easy walk to just about anything, a short commute to work and the cache of living in a stylish home.



Date: \_\_\_\_\_ Pet Fee \$ \_\_\_\_\_

Deposit \$ \_\_\_\_\_ Pet Rent \$ \_\_\_\_\_

Non-Refundable Administration Fee \$ \_\_\_\_\_ Rent Amount \$ \_\_\_\_\_

Application Fee \$ \_\_\_\_\_ Other \$ \_\_\_\_\_