



STONELEDGE IS LOCATED IN THE SOUGHT-AFTER CITY OF GRAPEVINE. ENJOY AND EXPLORE GRAPEVINE'S RESTORED MAIN STREET DISTRICT, INCLUDING RESTAURANTS, GALLERIES, WINERIES, SHOPPING AND ENTERTAINMENT.

SIMPSON PROPERTY GROUP COMMUNITIES

- ★ **Stoneledge**  
Premier Apartment Homes
- 1 Montelena Apartments  
A Simpson Property Group Community  
MontelenaApts.com

SHOPPING & ENTERTAINMENT

- 2 Grapevine Mills Mall
- 3 Gaylord Texan Hotel
- 4 Great Wolf Lodge
- 5 Grapevine Convention Center
- 6 Grapevine Vintage Railroad
- 7 Palace Theatre
- 8 Sea Life Aquarium
- 9 Legoland Discovery Center
- 10 AMC Grapevine Mills 30

WINERIES

- 11 Cross Timber Winery Tasting Room
- 12 Grape Vine Springs Winery
- 13 Farina's Winery
- 14 Homestead Winery
- 15 Umbra Winery
- 16 Wine Fusion Winery
- 17 Messina Hof Winery
- 18 Old Hickory Wine Bar
- 19 Su Vino Winery
- 20 Sloan & Williams

SCHOOLS

- Grapevine – Colleyville ISD
- Dove Elementary
- Grapevine Middle
- Colleyville Heritage High

- ✈ Dallas Fortworth Airport
- Historic Discript



401 Boyd Drive  
Grapevine, TX 76051  
P: 817.416.0200  
F: 817.416.0224  
StoneLedgeGrapevine.com



## INTERIOR AMENITIES

- + Authentic hand-scraped hardwood floors throughout; upgraded carpet in bedrooms
- + Expansive 9' ceilings equipped with ceiling fans & track lighting
- + Granite or Quartz countertops with natural Travertine backsplash
- + Stainless Steel, GE ENERGY STAR Appliances
- + Gourmet island with pendant lighting available
- + Custom 42" Maple Cabinetry with glass front display
- + Undermount stainless steel sinks
- + Built-In microwave
- + Opulent track lighting in kitchen and dining areas
- + Walk-in shower & garden tubs with curved shower rods available
- + Ceramic tile surround in tub and Shower
- + Upscale framed mirrors in bath
- + Walk-in closets with custom shelves & seasonal storage
- + 2" wood blinds
- + Full size washer and dryer connections
- + Private balcony or fenced yard available

## COMMUNITY AMENITIES

- + Resort-Style swimming pool with expansive tanning area
- + Outdoor cabana equipped with TVs and lounge seating
- + Relaxation Courtyard with Ornate Landscaping
- + Built-In premium outdoor grills
- + Expansive resident lounge with demonstration kitchen and seating area
- + Fully-equipped fitness center with cardio machines, free weights & strength training machines
- + Business center with PCs and iMacs
- + Elaborate entertainment lounge and Wi-Fi Café
- + Serving bar and TV gallery
- + Community conference room
- + Pet-friendly community with private pet park
- + Gated, limited-access community
- + One- and two- car garages
- + Covered carport parking
- + Electric car charging stations

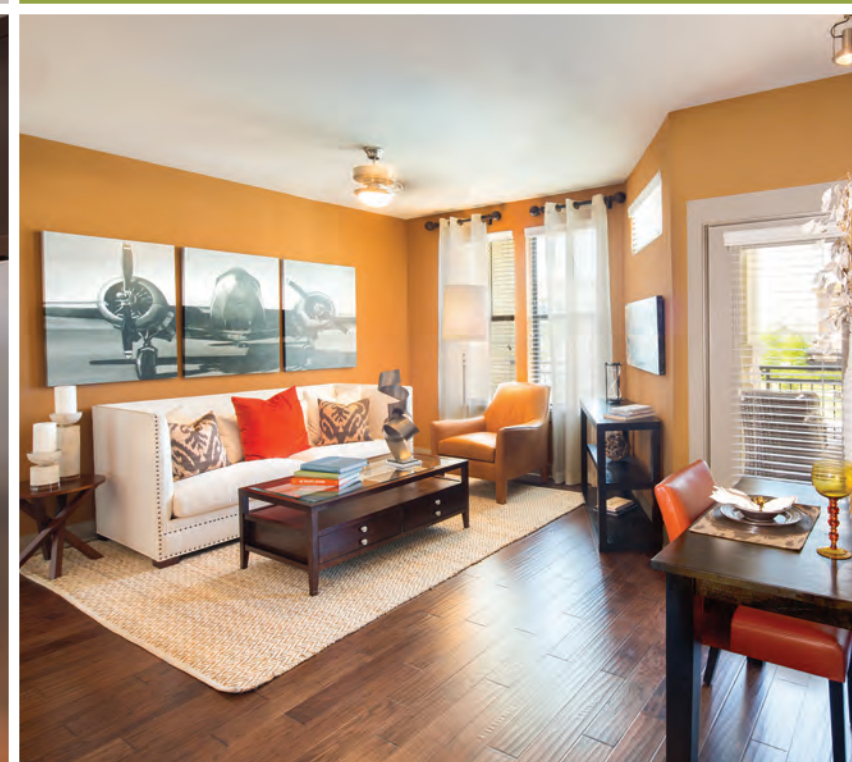


## Stoneledge

Located in the sought-after city of Grapevine, Stoneledge offers spacious apartment homes with luxurious finishes and premium amenities.

Stoneledge provides unparalleled convenience to both Dallas and Fort Worth, while creating a lifestyle abundant with year-round recreation, exquisite shopping and distinctive dining.

With nearby access to Northwest Highway and Main Street, busy professionals are just minutes from the DFW International Airport as well as local wineries, live music venues and renowned destinations that make Grapevine a desirable place to live.



## ELEVATE YOURSELF TO A HIGHER STANDARD OF LIVING AT STONELEDGE

Per person application fee \_\_\_\_\_

Base security deposit \_\_\_\_\_

Administration fee \_\_\_\_\_

Pet fees/deposit \_\_\_\_\_

